



INFILL HOUSE DESIGNS FOR:  
**TRUXTUN HISTORIC DISTRICT**

PORTSMOUTH, VA  
08.01.08



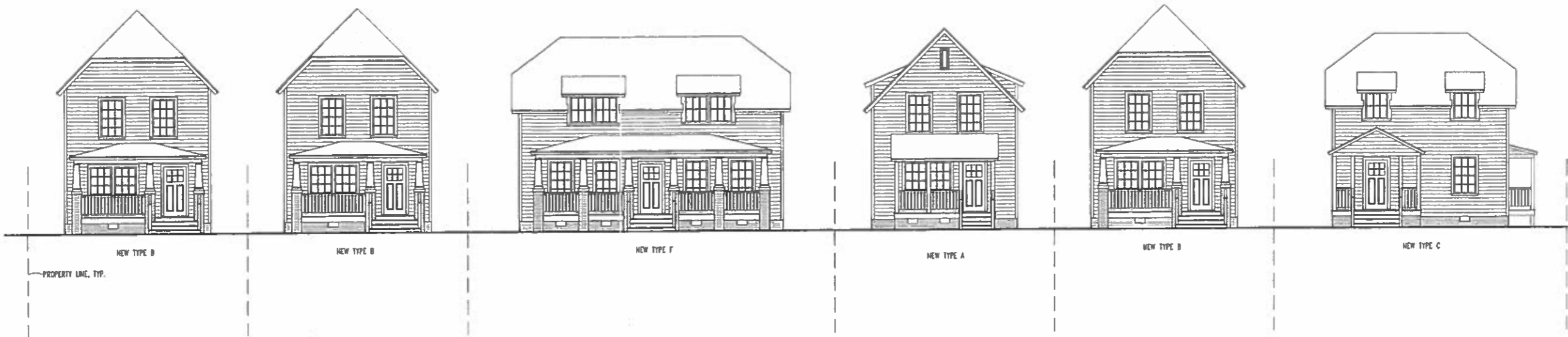
1 Site Plan  
S2.1 scale 1"=100'



DATE	REVISION

PROJECT NUMBER  
2007-0086  
PROJECT MANAGER  
CCJ  
DRAWN BY  
CCJ  
DRAWING TITLE  
SITE PLAN

S



2 Streetscape w/ New Houses  
 S2.2 scale 1/8"=1'-0" a201



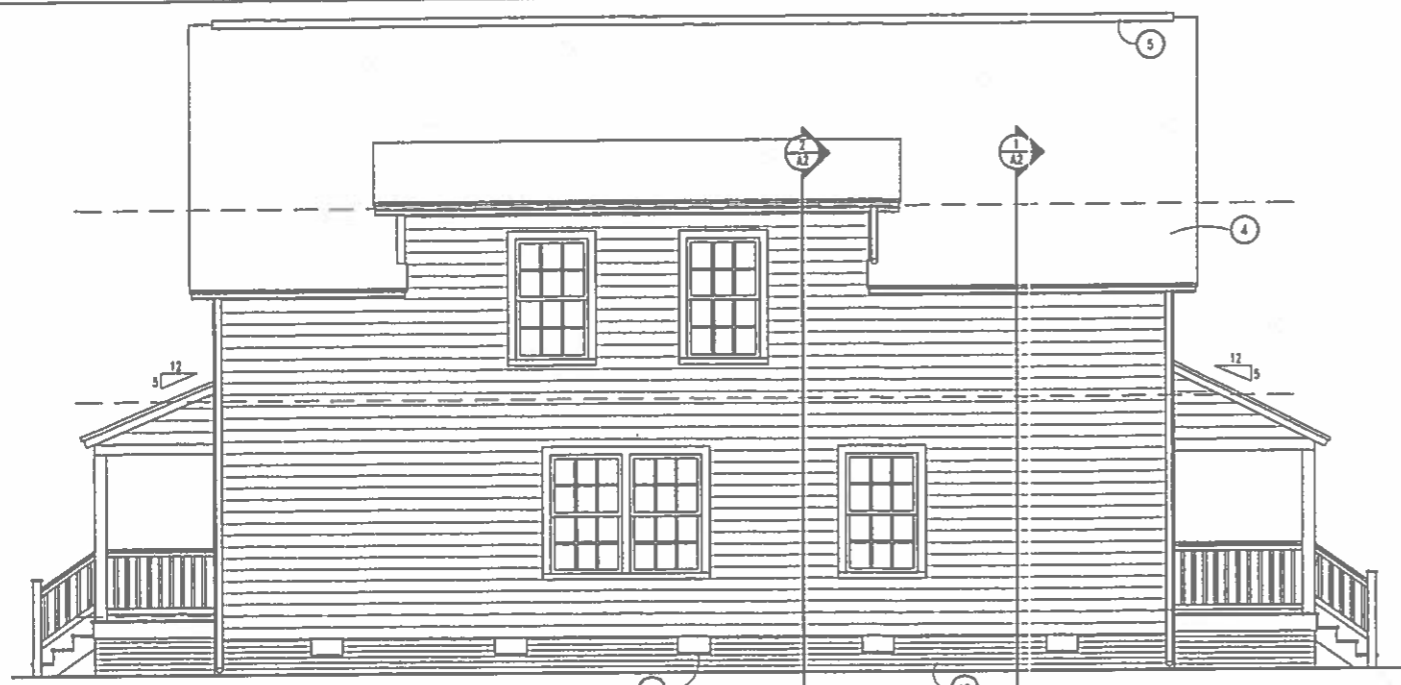
1 Streetscape w/ Existing Houses  
 S2.2 scale 1/8"=1'-0" a201

TOWN OF WASHINGTON ARCHITECTURAL BOARD

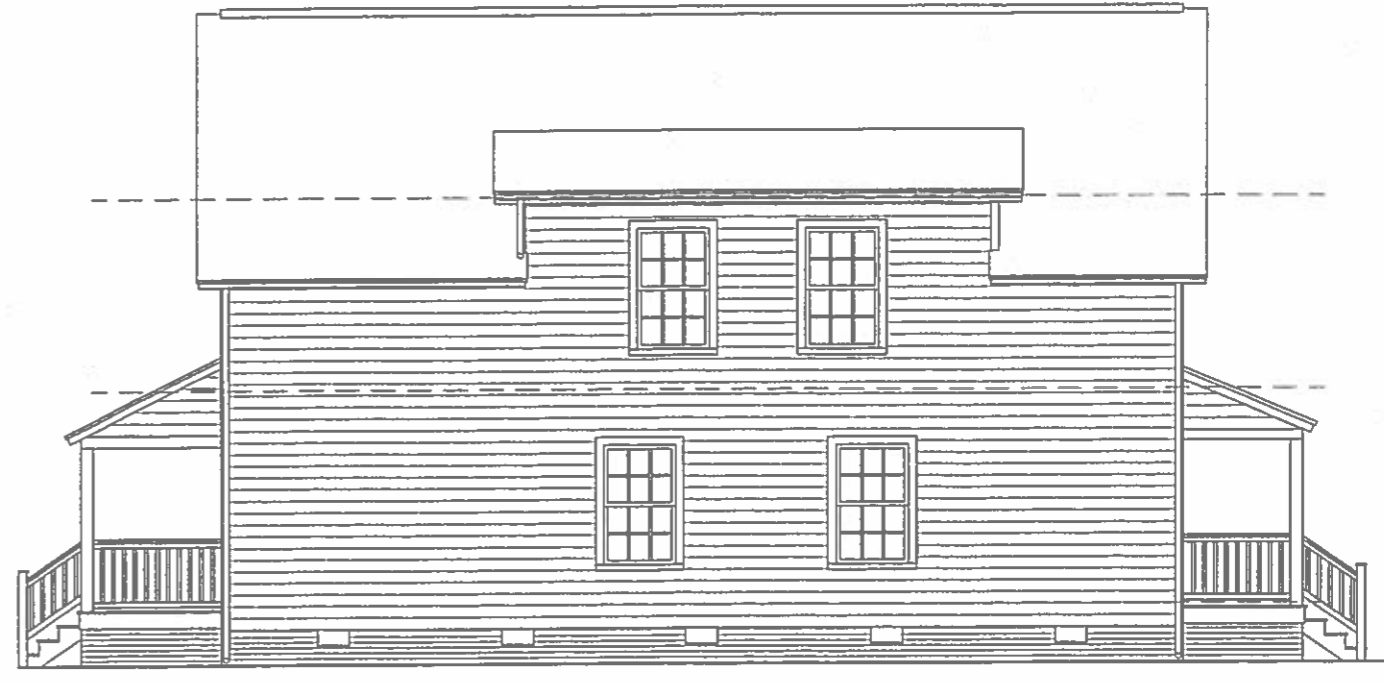
DATE	REVISION

PROJECT NUMB  
 2007-0081  
 PROJECT MANA  
 CCJ  
 DRAWN BY:  
 CCJ  
 DRAWING TITLE  
 STREETSCAPE

S



5 Left Elevation  
A1 scale 1/4"=1'-0" a201



6 Right Elevation  
A1 scale 1/4"=1'-0" a201

- 1 SMOOTH PAINTED HARDPLANK LAP SIDING WITH 6" EXPOSURE
- 2 5/4 X 4 PAINTED FIR DOUBLE CORNERBOARDS
- 3 WOODEN WINDOW UNIT WITH ALUMINUM CLAD OR PRIMED WOOD EXTERIOR WITH SIMULATED DIVIDED LIGHT 7/8" MUNTINS (PERMANENTLY APPLIED MUNTINS INSIDE AND OUT WITH SPACER BAR BETWEEN GLASS), LIGHT PATTERN AS SHOWN. EAGLE MODERN DIVIDED LIGHT, OR APPROVED EQUAL.
- 4 ARCHITECTURAL GRADE ASPHALT SHINGLES- ELK PRESTIGE HIGH DEFINITION, OR BETTER
- 5 CONTINUOUS RIDGE VENT
- 6 5" PREFINISHED ALUMINUM HALF ROUND GUTTER W/ 3" ROUND DOWNSPOUT- MATCH TRIM COLOR
- 7 PAINTED WOODEN ENTRY DOOR WITH TRUE DIVIDED LIGHT GLAZING

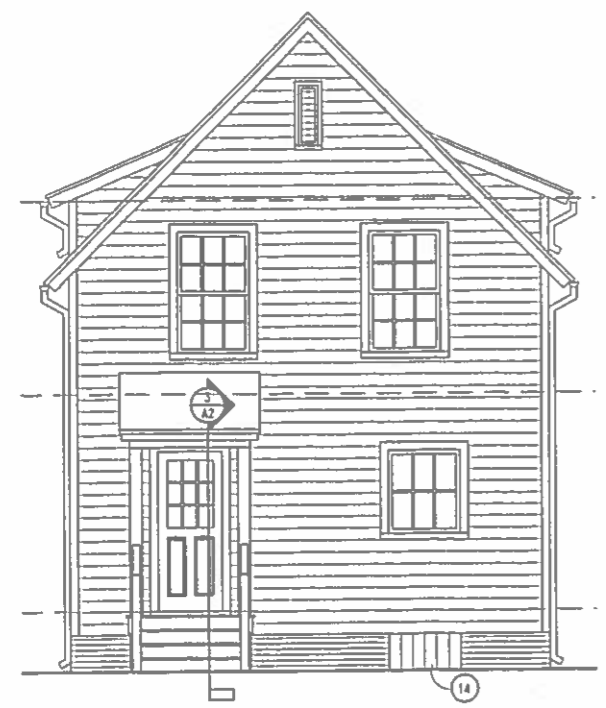
- 8 PAINTED 5/4 X 4 FIR CASING
- 9 FLASH ALL HORIZONTAL PROJECTIONS, TYP.
- 10 MODULAR BRICK OVER CMU
- 11 (3) 2x12 GIRDER ON 8x8x16 CMU PIER, GROUTED FULL, ON 2'-6" X 3'-6" X 1'-0" DEEP CONC. FTG. REHF. W/ (5) #4 BAR EA. WAY, MAX. 8'-0" SPAN FOR GIRDER
- 12 18 X 8 GALV. MET. OPERABLE FOUNDATION VENT
- 13 10"W X 30"H PAINTED WOODEN OR FIBERGLASS LOUVER WITH BRICKMOLD CASING
- 14 3'-0" WIDE CRAWLSPACE ACCESS DOOR

NOTE: ANY DEVIATION FROM THE EXTERIOR ELEVATIONS AS SHOWN SHALL REQUIRE SUBMISSION OF REVISED DRAWINGS TO THE C.A.R.

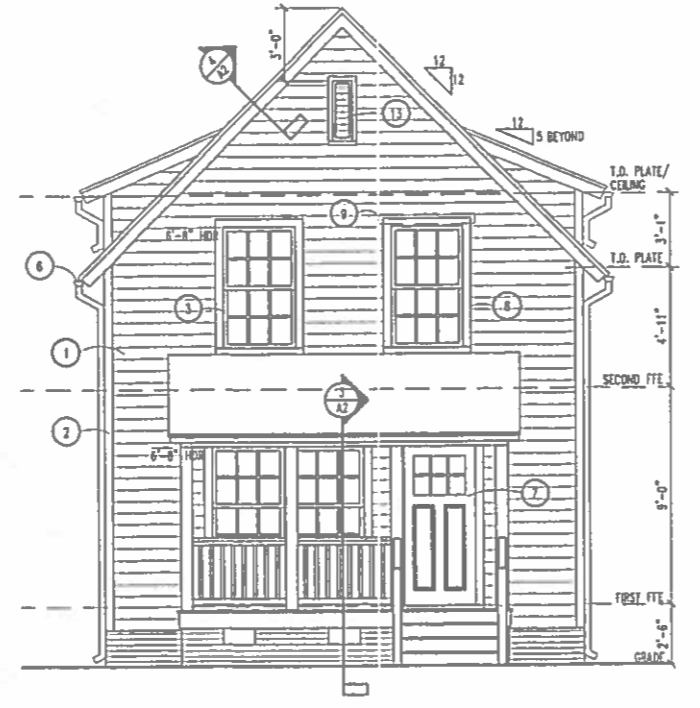
- A 3'-0" X 5'-0" DOUBLE HUNG 6 OVER 6
- B 3'-0" X 3'-6" AWNING 6 LIGHT

8 Keyed Notes  
A1

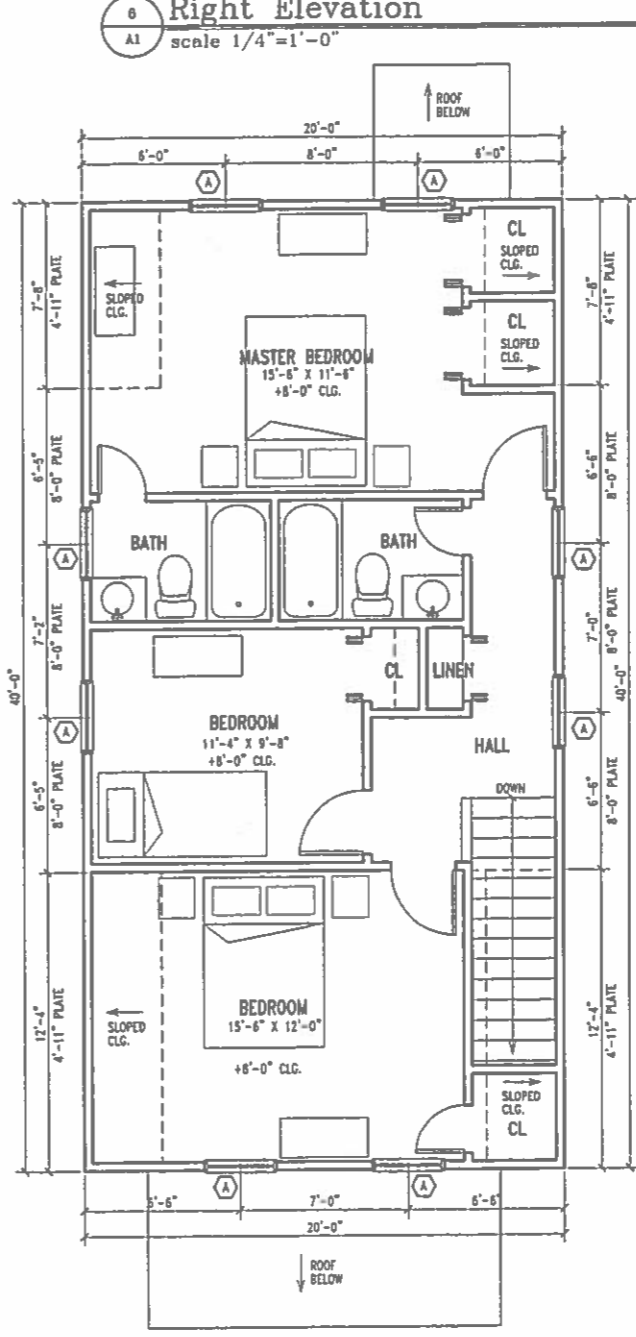
7 Window Schedule  
A1



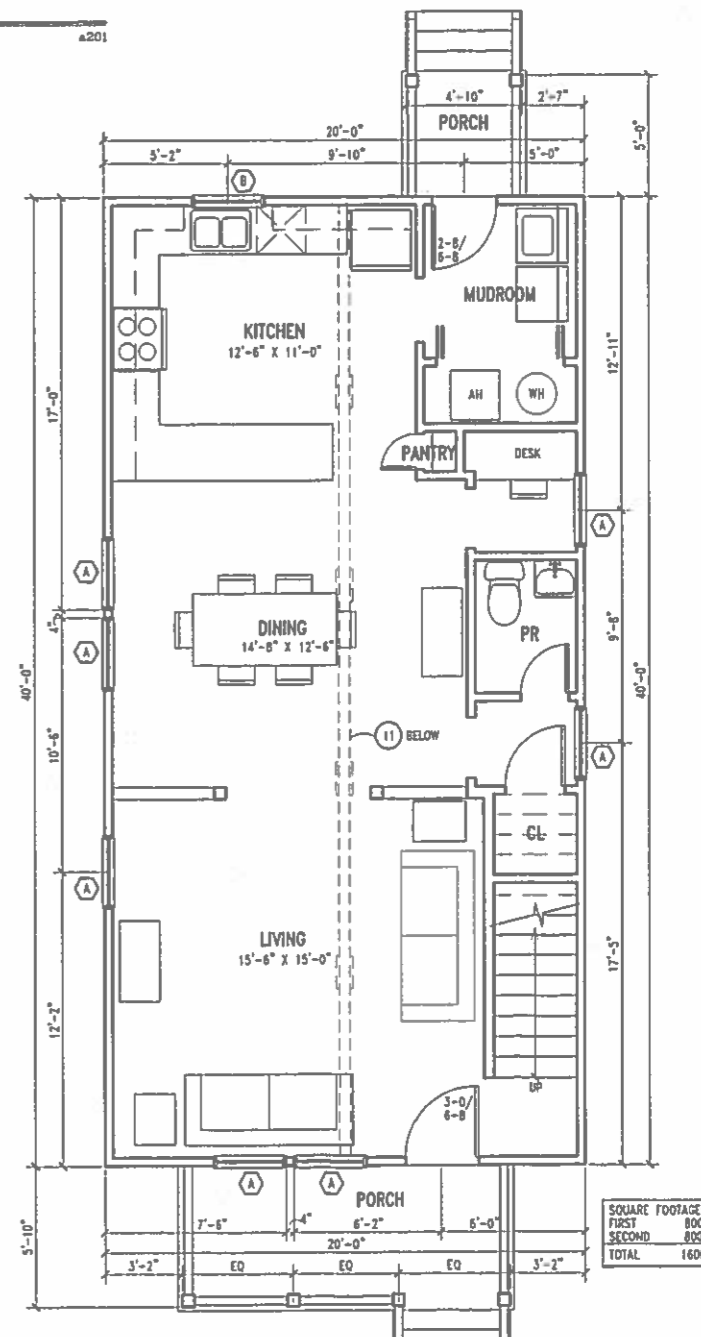
4 Rear Elevation  
A1 scale 1/4"=1'-0" a201



3 Front Elevation  
A1 scale 1/4"=1'-0" a201



2 Second Floor Plan  
A1 scale 1/4"=1'-0" n02

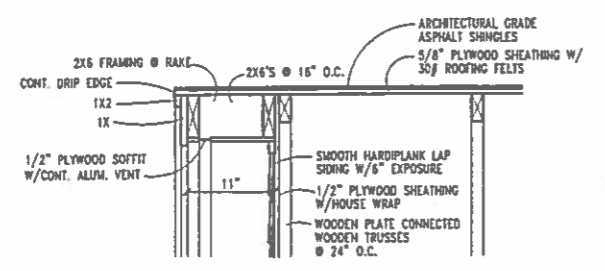


1 First Floor Plan  
A1 scale 1/4"=1'-0" n01

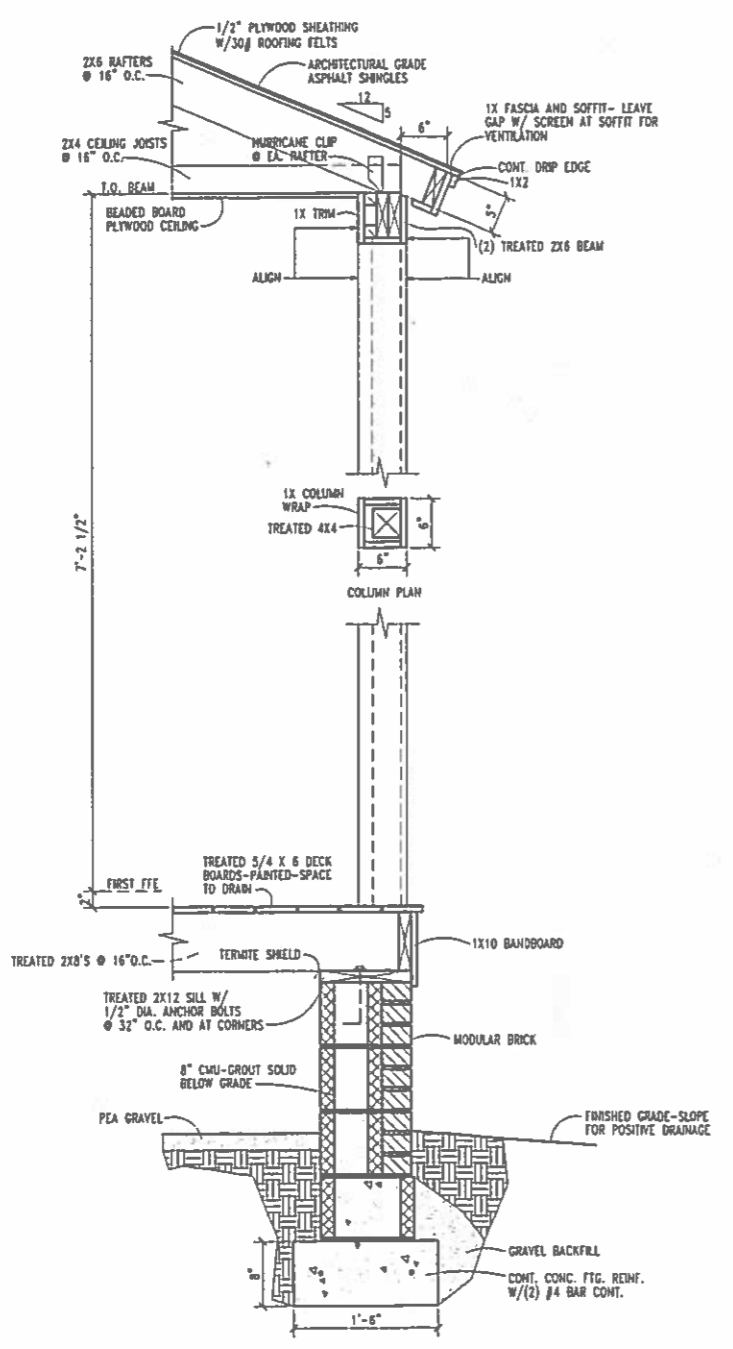
SQUARE FOOTAGE:	FIRST	800
	SECOND	800
	TOTAL	1600

DATE	REV

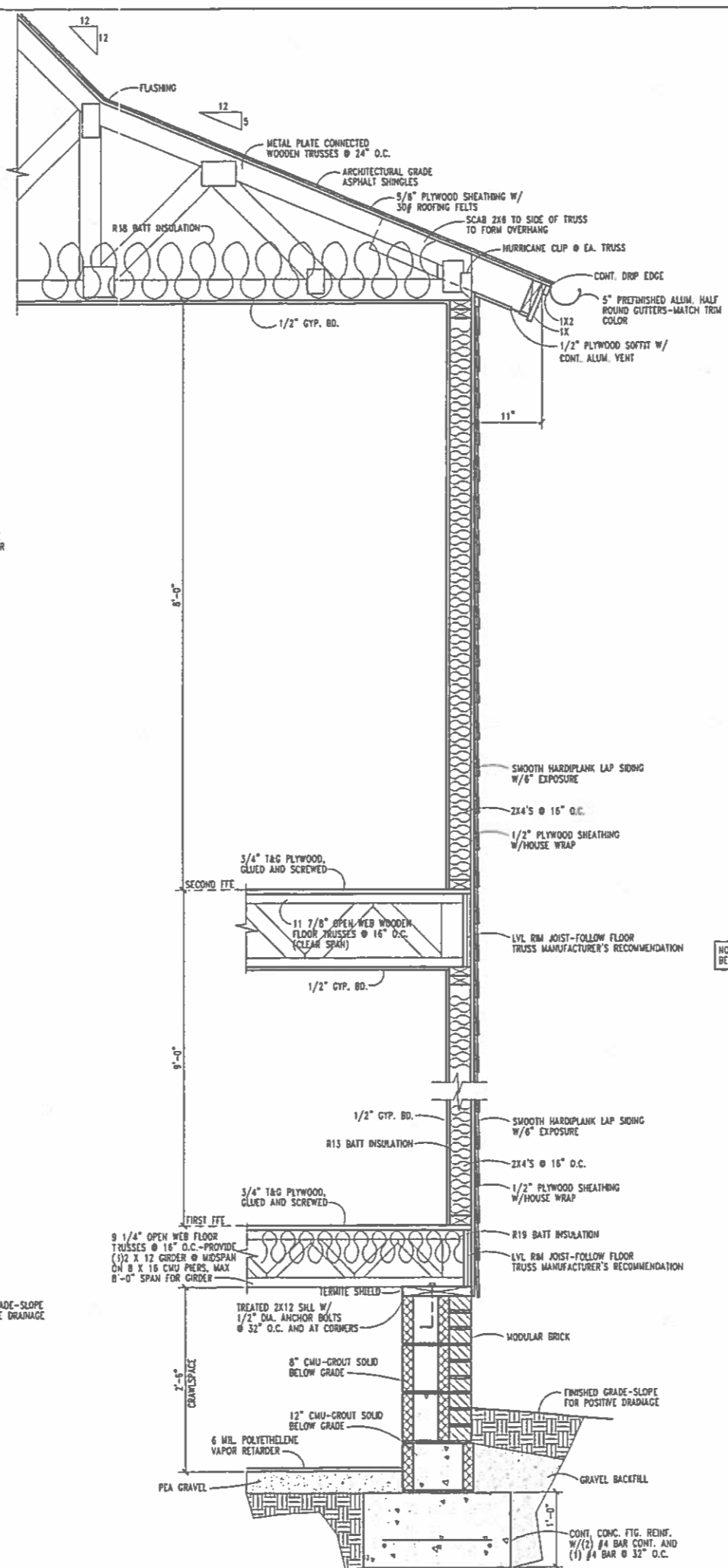
PROJECT NUM: 2007-008  
PROJECT MAN: CCJ  
DRAWN BY: CCJ  
DRAWING TITLE: MODEL A-1 FLOOR PLAN



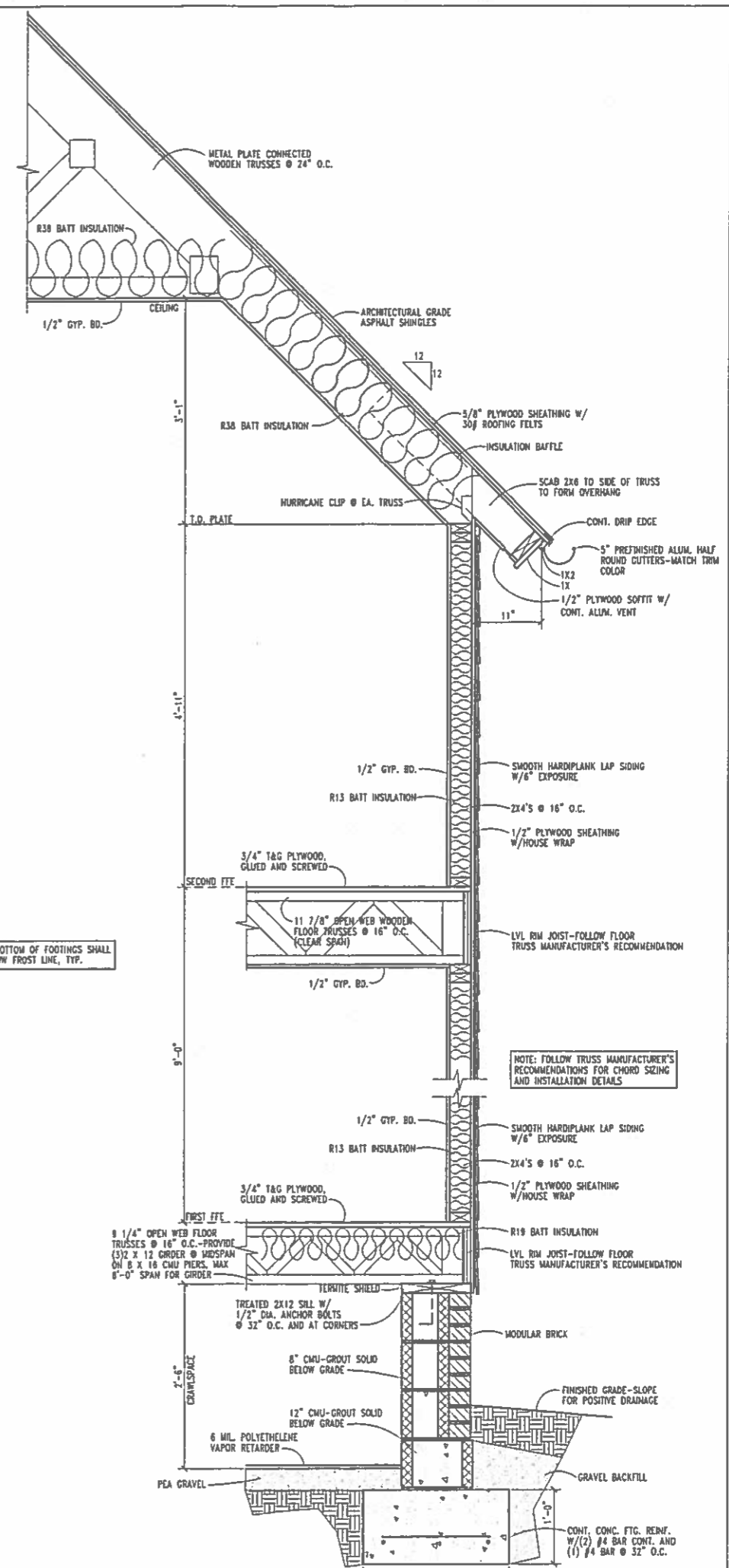
4 Rake Detail  
A2 1"=1'-0"



3 Wall Section  
A2 1"=1'-0"



2 Wall Section  
A2 1"=1'-0"



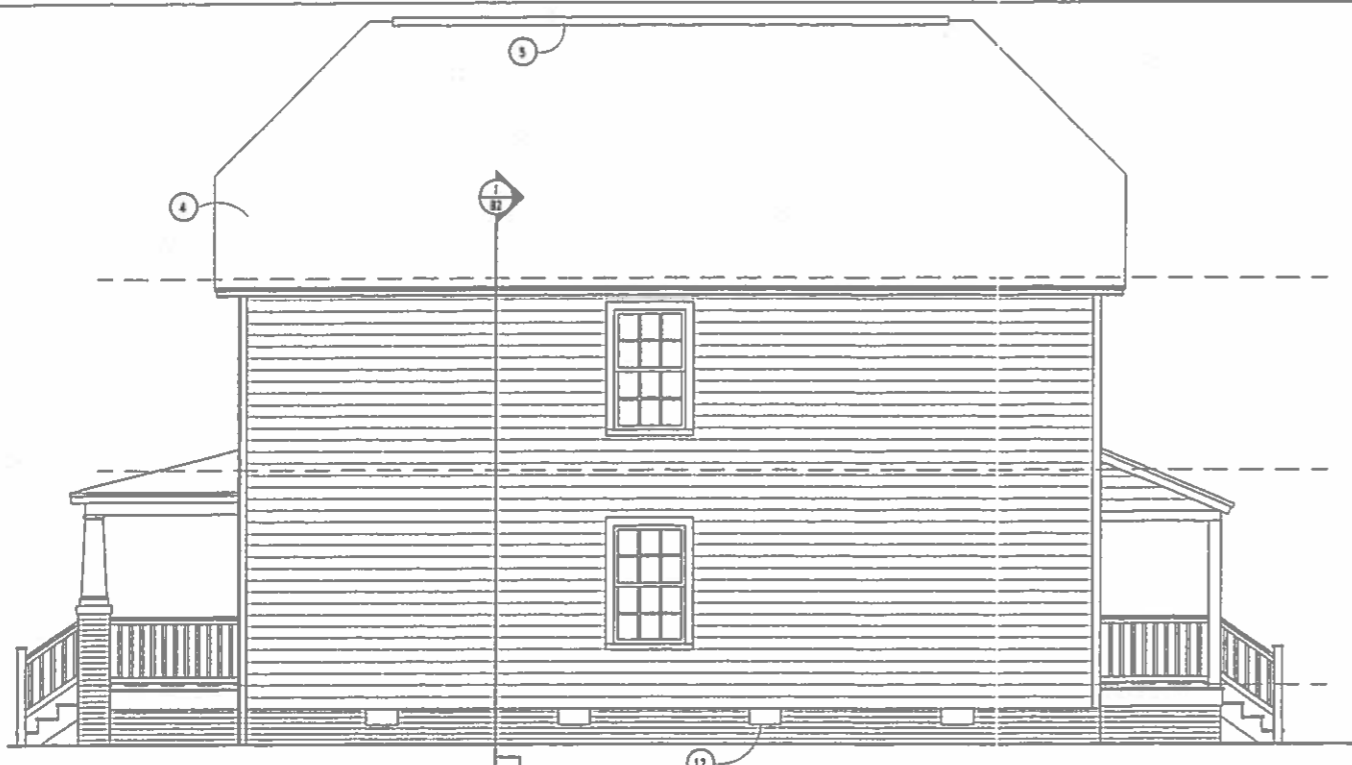
1 Wall Section  
A2 1"=1'-0"

NOTE: BOTTOM OF FOOTINGS SHALL BE BELOW FROST LINE, TYP.

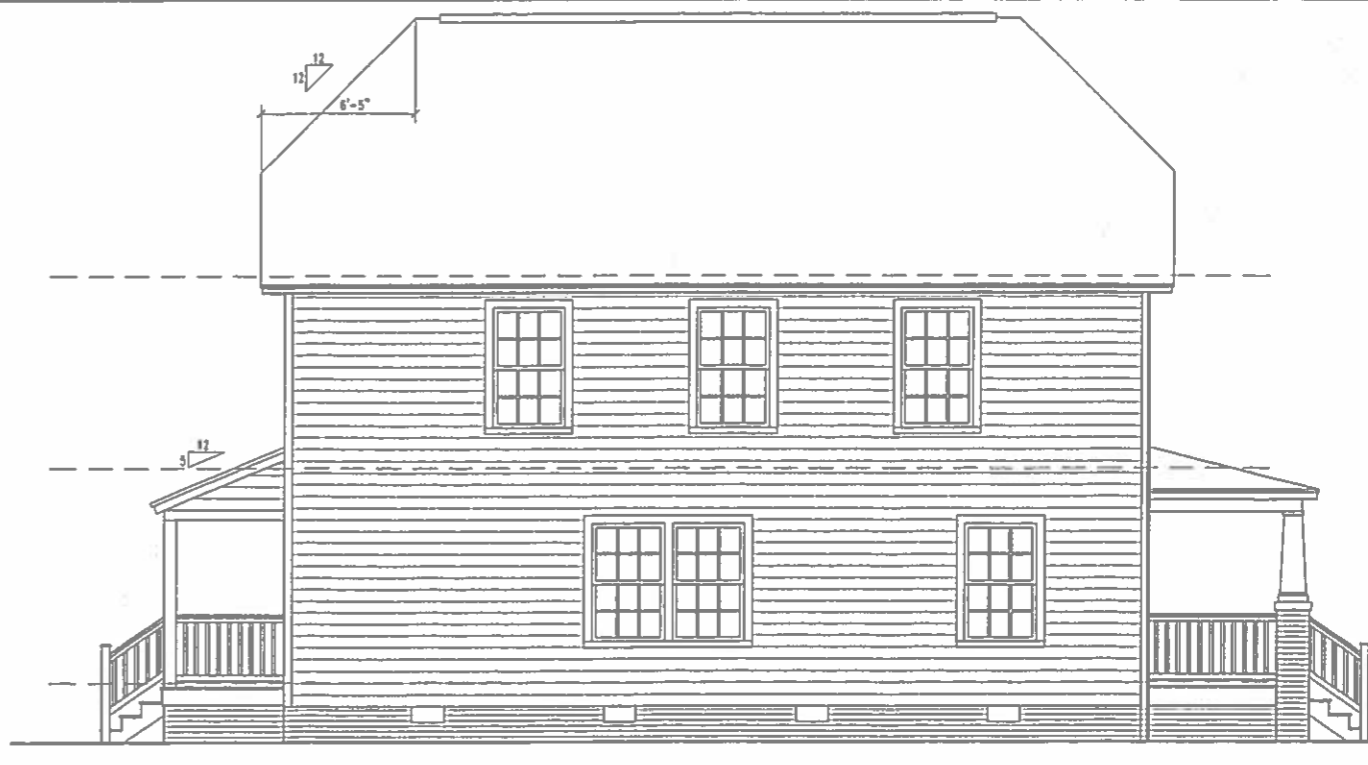
NOTE: FOLLOW TRUSS MANUFACTURER'S RECOMMENDATIONS FOR CHORD SIZING AND INSTALLATION DETAILS

DATE	REV

PROJECT NAME  
2007-0081  
PROJECT MANA  
CCJ  
DRAWN BY  
CCJ  
DRAWING TITLE  
MODEL A-V  
AND DETAIL



5 Right Elevation  
BI scale 1/4"=1'-0" a201



6 Left Elevation  
BI scale 1/4"=1'-0" a201

- 1 SMOOTH PAINTED HARDPLANK LAP SIDING WITH 6" EXPOSURE
- 2 5/4 X 4 PAINTED FIR DOUBLE CORNERBOARDS
- 3 WOODEN WINDOW UNIT WITH ALUMINUM CLAD OR PRIMED WOOD EXTERIOR WITH SIMULATED DIVIDED LIGHT 7/8" MUNTINS (PERMANENTLY APPLIED MUNTINS INSIDE AND OUT WITH SPACER BAR BETWEEN GLASS), LIGHT PATTERN AS SHOWN. EAGLE MODERN DIVIDED LIGHT, OR APPROVED EQUAL.
- 4 ARCHITECTURAL GRADE ASPHALT SHINGLES - ELK PRESTIQUE HIGH DEFINITION, OR BETTER
- 5 CONTINUOUS RIDGE VENT
- 6 5" PREFINISHED ALUMINUM HALF ROUND GUTTER W/ 3" ROUND DOWNSPOUT - MATCH TRIM COLOR
- 7 PAINTED WOODEN ENTRY DOOR WITH TRUE DIVIDED LIGHT GLAZING

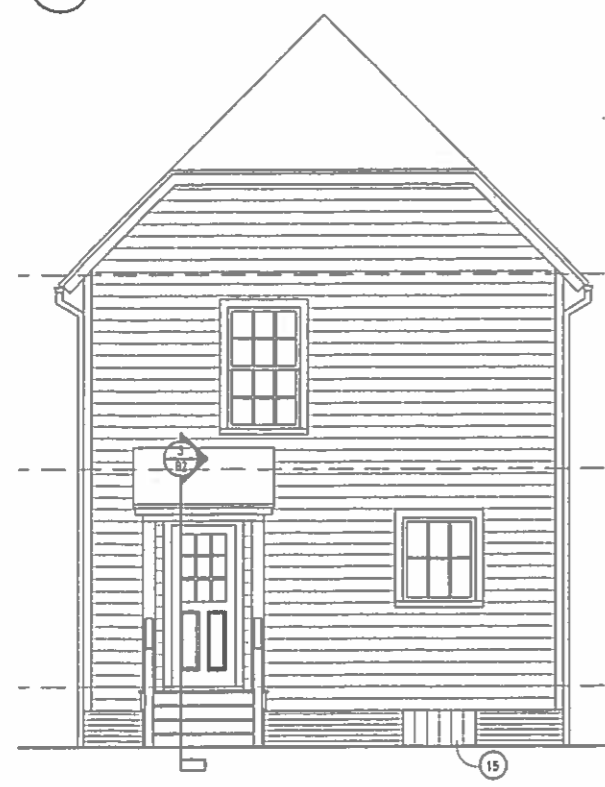
- 8 PAINTED 5/4 X 4 FIR CASING
- 9 CLIPPED "JERKHEAD" ROOF
- 10 MODULAR BRICK OVER CMU
- 11 BRICK PIER W/ PHTD. WOODEN COLUMN
- 12 16 X 8 GALV. MET. OPERABLE FOUNDATION VENT
- 13 FLASH ALL HORIZONTAL PROJECTIONS, TYP.
- 14 (3) 2X12 GIRDER ON 8X8X16 CMU PIER, CROTTED FULL ON 2'-6" X 3'-6" X 1'-0" DEEP CONC. FTG. REHF. W/(3) #4 BAR EA. WAY, MAX. 8'-0" SPAN FOR GIRDER
- 15 3'-0" WIDE CRAWLSPACE ACCESS DOOR

NOTE: ANY DEVIATION FROM THE EXTERIOR ELEVATIONS AS SHOWN SHALL REQUIRE SUBMISSION OF REVISED DRAWINGS TO THE C.A.R.

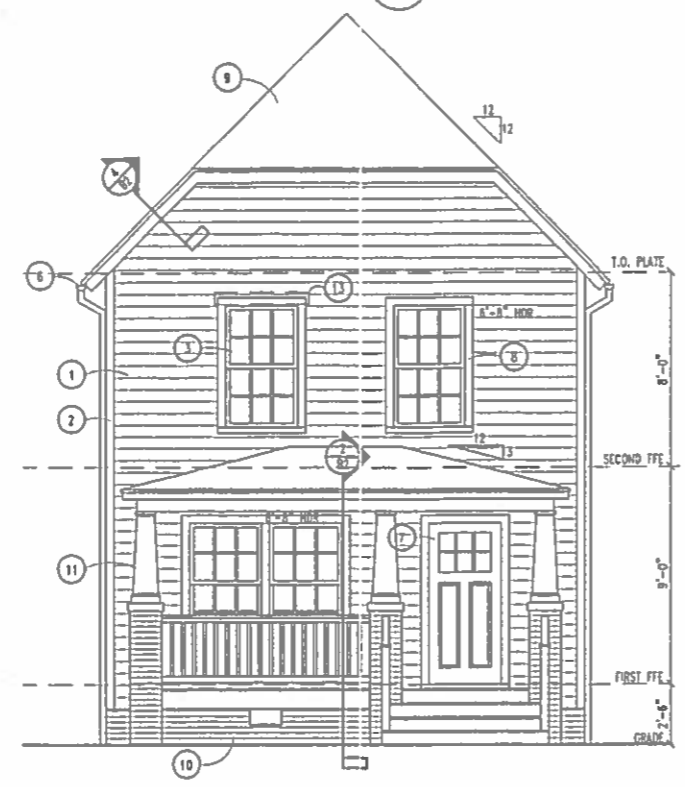
- A 3'-0" X 5'-0" DOUBLE HUNG 6 OVER 6
- B 3'-0" X 3'-6" AWNING 6 LIGHT

8 Keyed Notes  
BI

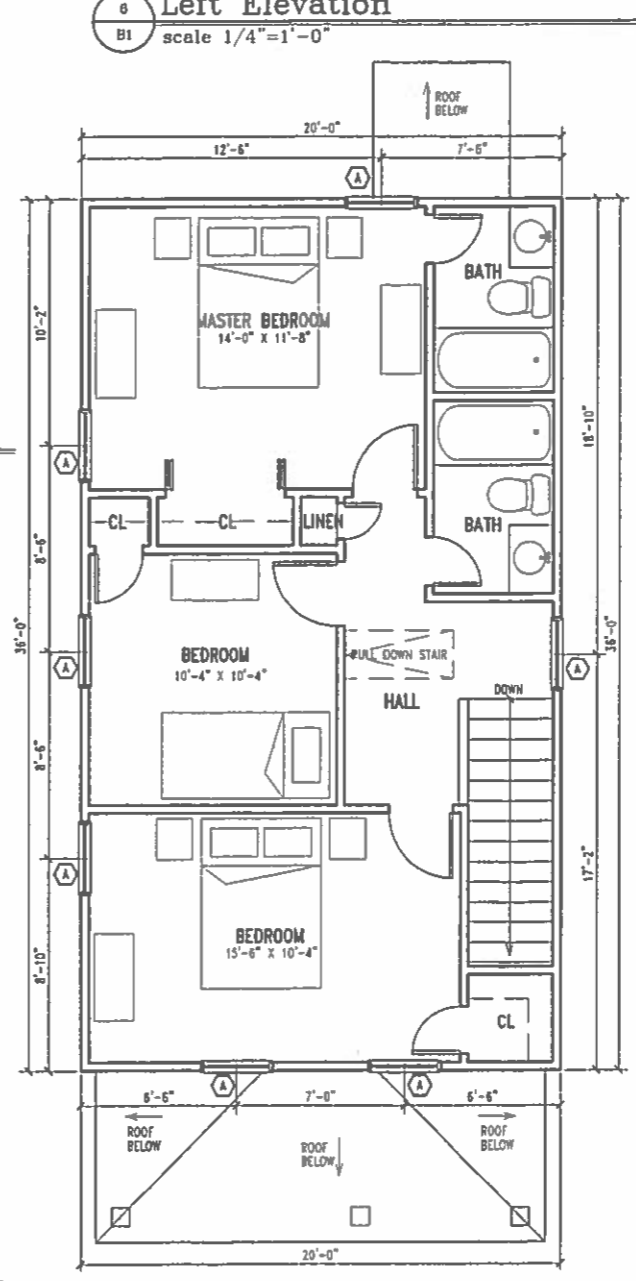
7 Window Schedule  
BI



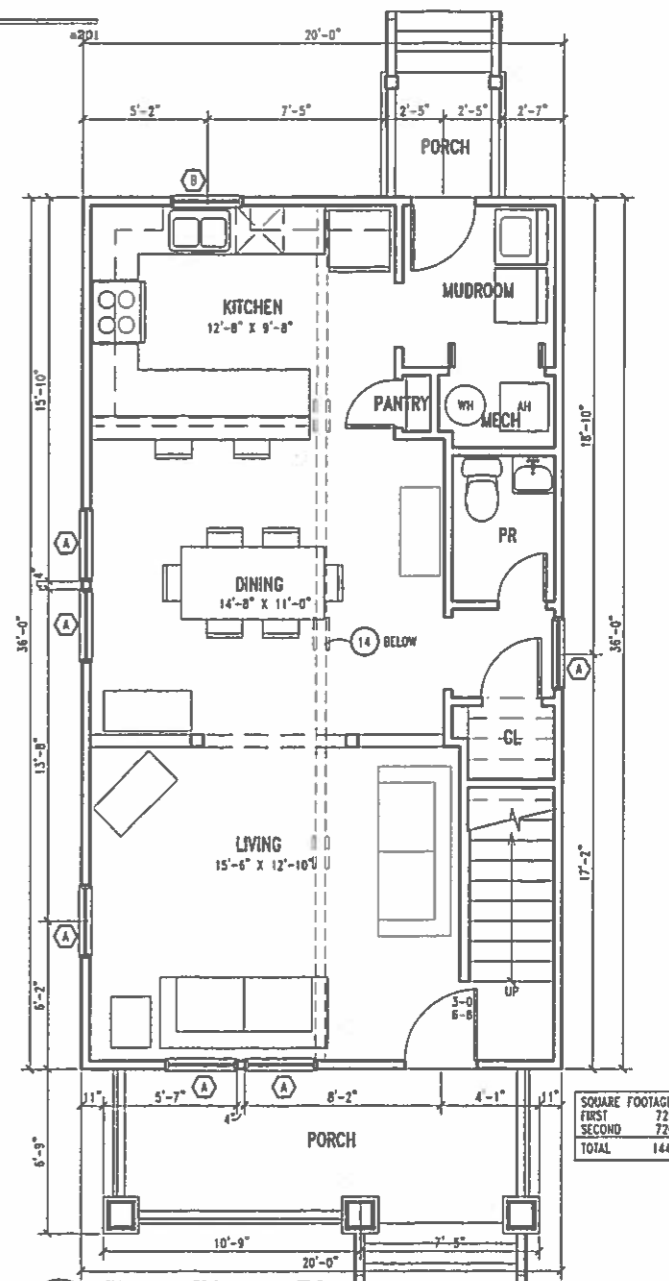
4 Rear Elevation  
BI scale 1/4"=1'-0" a201



3 Front Elevation  
BI scale 1/4"=1'-0" a201



2 Second Floor Plan  
BI scale 1/4"=1'-0" 1102



1 First Floor Plan  
BI scale 1/4"=1'-0" 1101

SQUARE FOOTAGE:	
FIRST	720
SECOND	720
TOTAL	1440

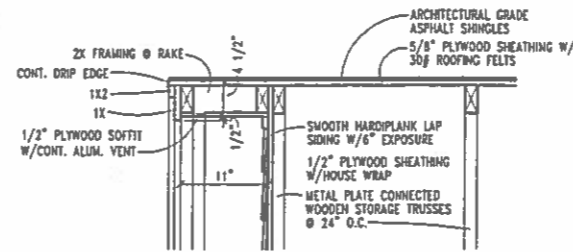
DATE	REV

PROJECT NUM  
2007-008  
PROJECT MAN  
CCJ  
DRAWN BY  
CCJ  
DRAWING TITLE  
MODEL B-  
FLOOR PLAN

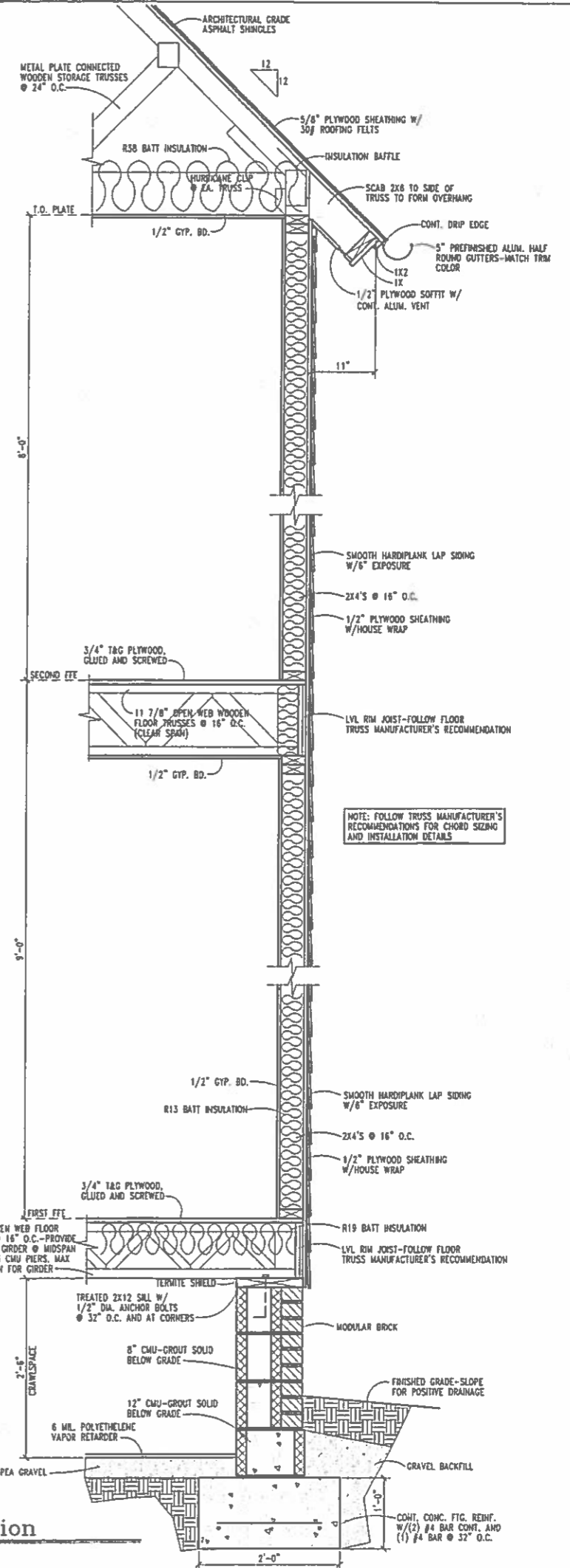


DATE	REVISION

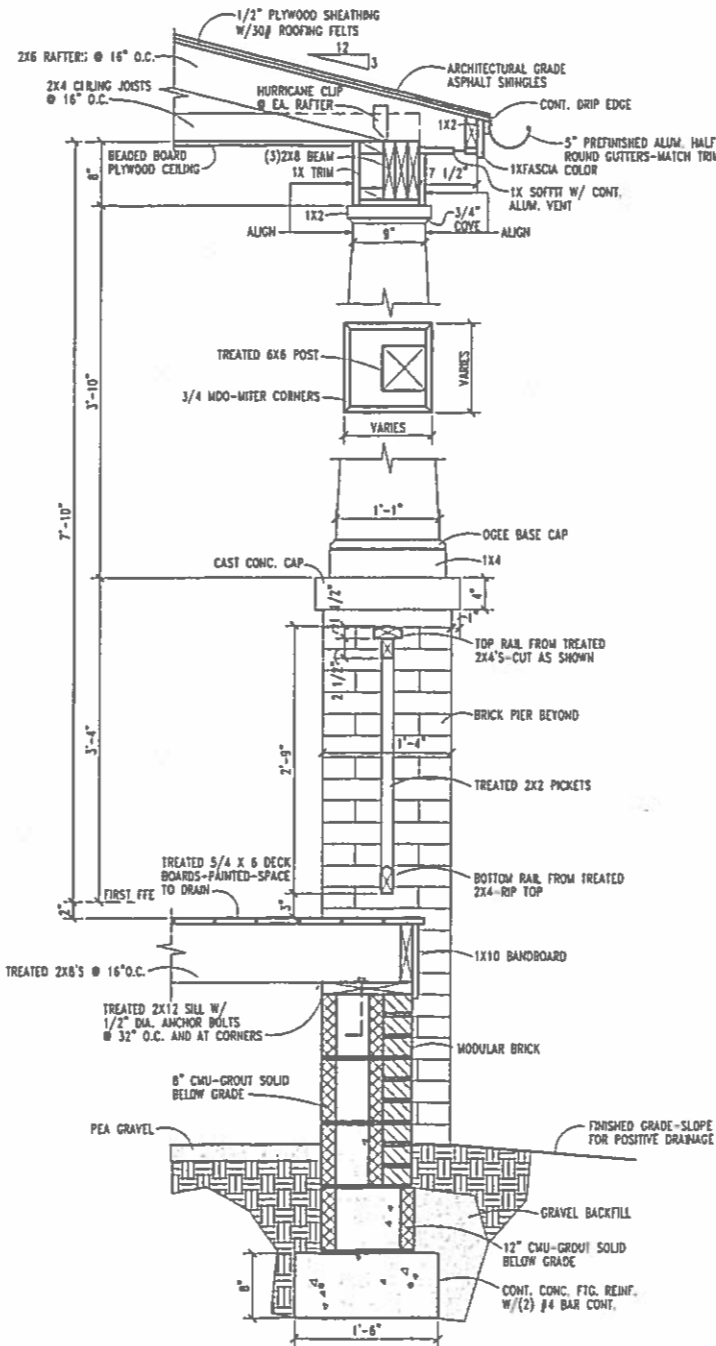
PROJECT NUMBER  
2007-0088  
PROJECT MANAGER  
CCJ  
DRAWN BY  
CCJ  
DRAWING TITLE  
MODEL B-W/  
AND DETAILS



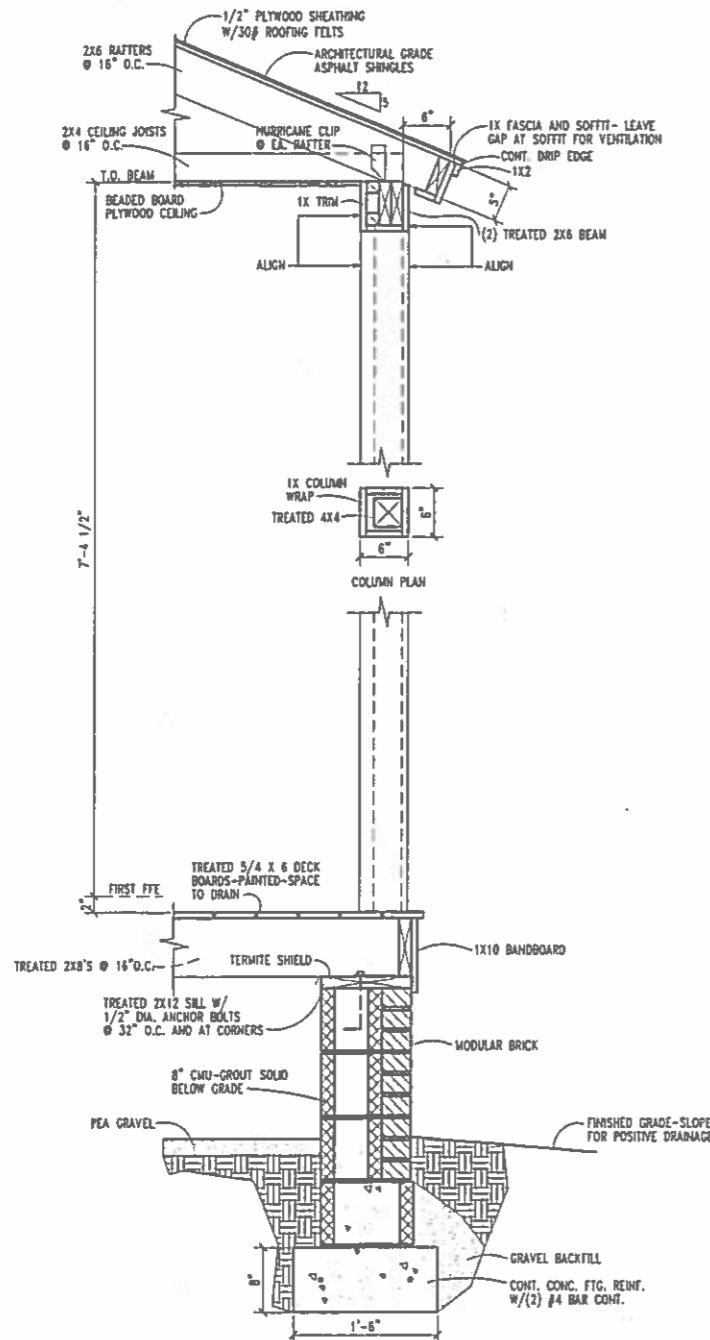
4 Rake Detail  
B2 1"=1'-0"



1 Wall Section  
B2 1"=1'-0"



2 Wall Section  
B2 1"=1'-0"



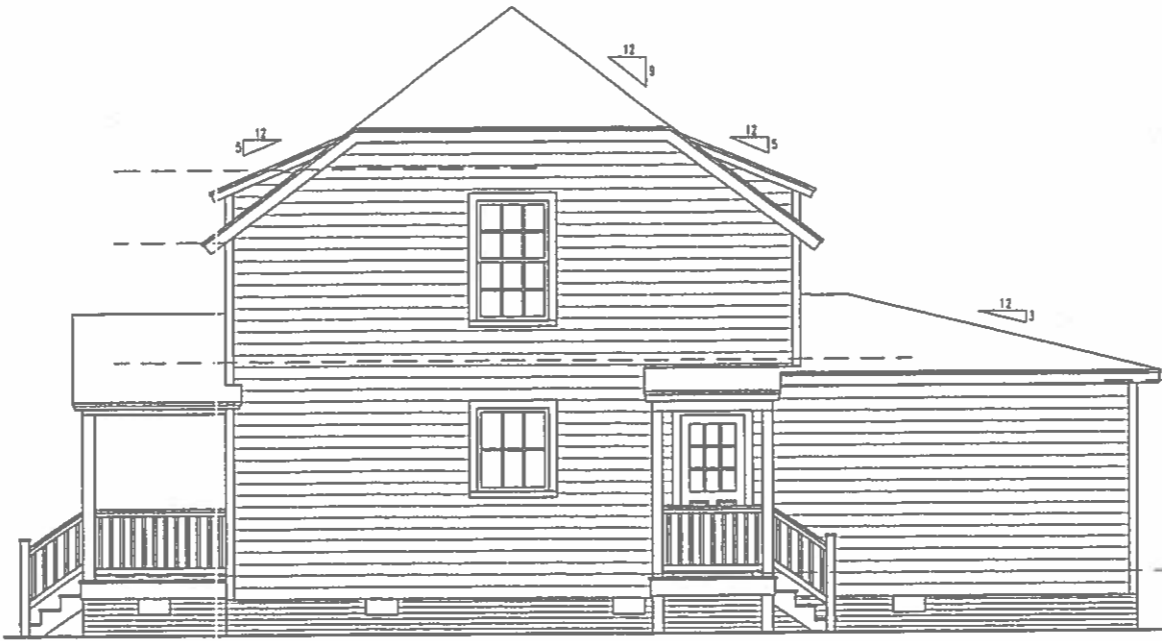
3 Wall Section  
B2 1"=1'-0"

NOTE: BOTTOM OF FOOTINGS SHALL BE BELOW FROST LINE, TYP.

NOTE: FOLLOW TRUSS MANUFACTURER'S RECOMMENDATIONS FOR CHORD SIZING AND INSTALLATION DETAILS.



4 Rear Elevation  
C1 scale 1/4"=1'-0" a201



5 Right Elevation  
C1 scale 1/4"=1'-0" a201



6 Front Elevation  
C1 scale 1/4"=1'-0" a201

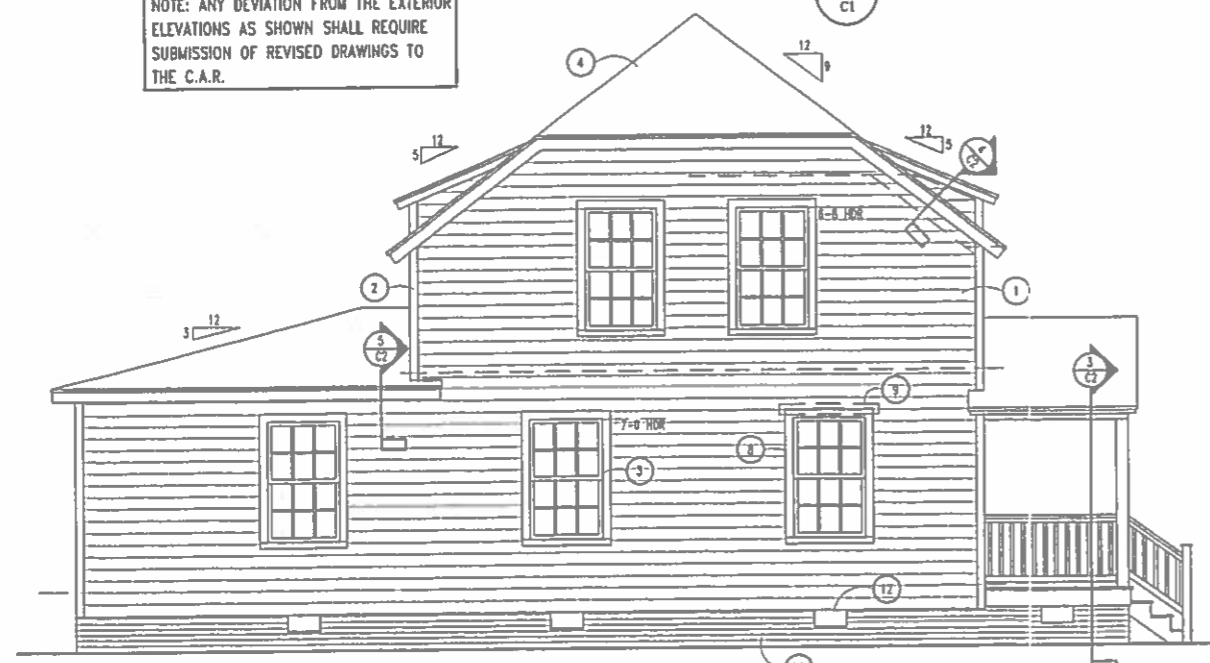
- 1 SMOOTH PAINTED HARDPLANK LAP SIDING WITH 6" EXPOSURE
- 2 5/4 X 4 PAINTED FIR DOUBLE CORNERBOARDS
- 3 WOODEN WINDOW UNIT WITH ALUMINUM CLAD OR PRIMED WOOD EXTERIOR WITH SIMULATED DIVIDED LIGHT 7/8" MUNTINS (PERMANENTLY APPLIED MUNTINS INSIDE AND OUT WITH SPACER BAR BETWEEN GLASS), LIGHT PATTERN AS SHOWN. EAGLE MODERN DIVIDED LIGHT, OR APPROVED EQUAL.
- 4 ARCHITECTURAL GRADE ASPHALT SHINGLES- ELK PRESTROKE HIGH DEFINITION, OR BETTER
- 5 CONTINUOUS RIDGE VENT
- 6 CLIPPED "JERKINHEAD" ROOF
- 7 PAINTED WOODEN ENTRY DOOR WITH TRUE DIVIDED LIGHT GLAZING
- 8 PAINTED 5/4 X 4 FIR CASING
- 9 FLASH ALL HORIZONTAL PROJECTIONS, TYP.
- 10 MODULAR BRICK OVER CMU
- 11 (3) 2X12 GIRDER ON 8X8X18 CMU PIER, GROUTED FULL, ON 2'-6" X 3'-6" X 1'-0" DEEP CONC. FIG. REINF. W/(3) #4 BAR EA. WAT, MAX. 8'-0" SPAN FOR GIRDER
- 12 16 X 8 GALV. MET. OPERABLE FOUNDATION VENT
- 13 CONTINUOUS LOAD BEARING WALL
- 14 3'-0" WIDE CRAWLSPACE ACCESS DOOR

8 Keyed Notes  
C1

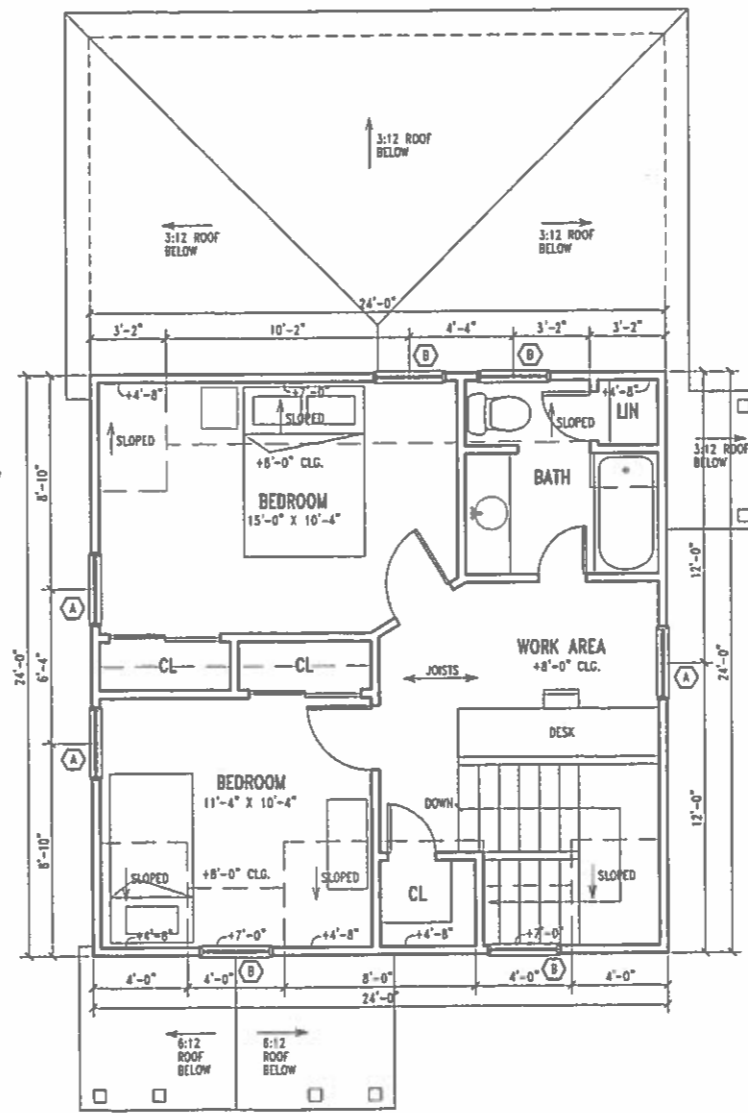
NOTE: ANY DEVIATION FROM THE EXTERIOR ELEVATIONS AS SHOWN SHALL REQUIRE SUBMISSION OF REVISED DRAWINGS TO THE C.A.R.

- A 3'-0" X 5'-0" DOUBLE HUNG 6 OVER 6
- B 3'-0" X 3'-6" AWNINGS 6 LIGHT

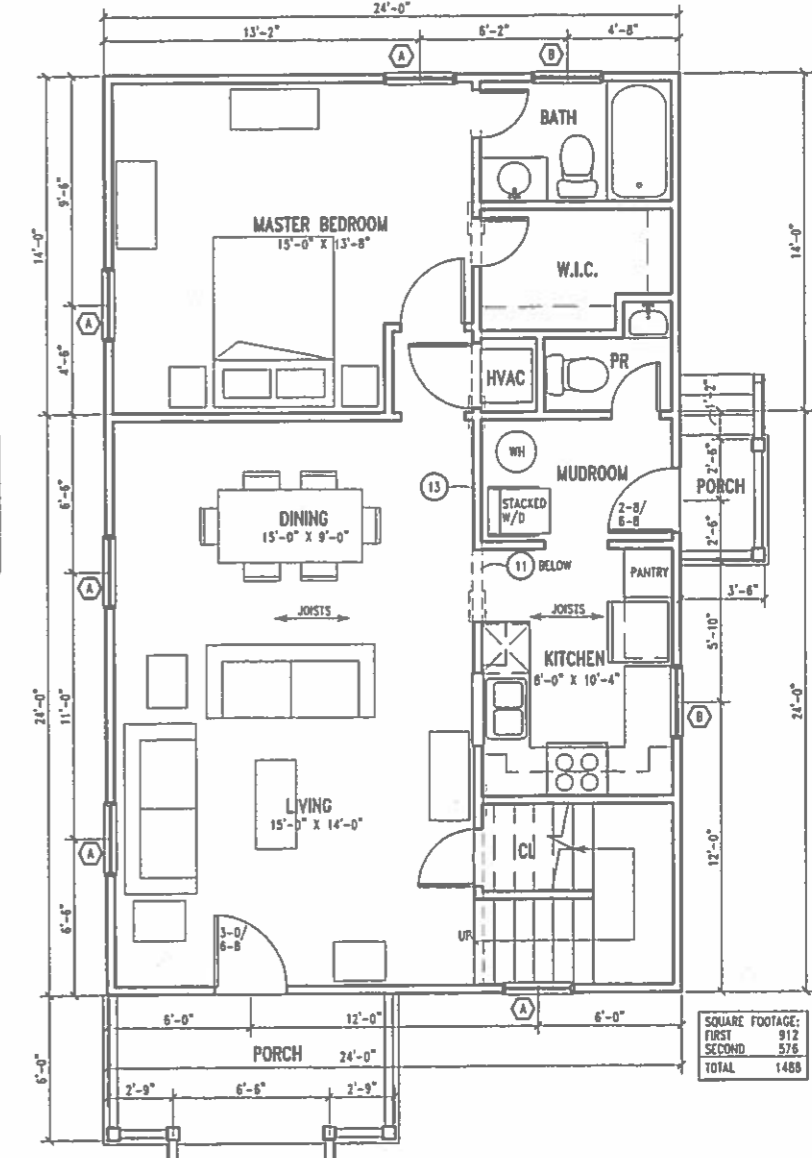
7 Window Schedule  
C1



3 Left Elevation  
C1 scale 1/4"=1'-0" a201



2 Second Floor Plan  
C1 scale 1/4"=1'-0" 1102



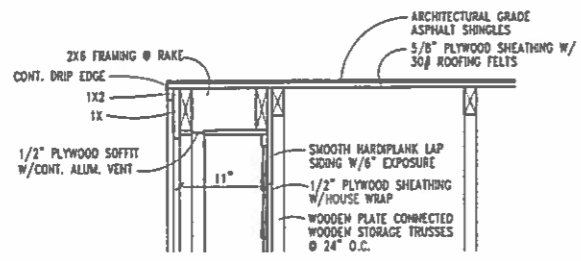
1 First Floor Plan  
C1 scale 1/4"=1'-0" 1101

SQUARE FOOTAGE:	
FIRST	912
SECOND	576
TOTAL	1488

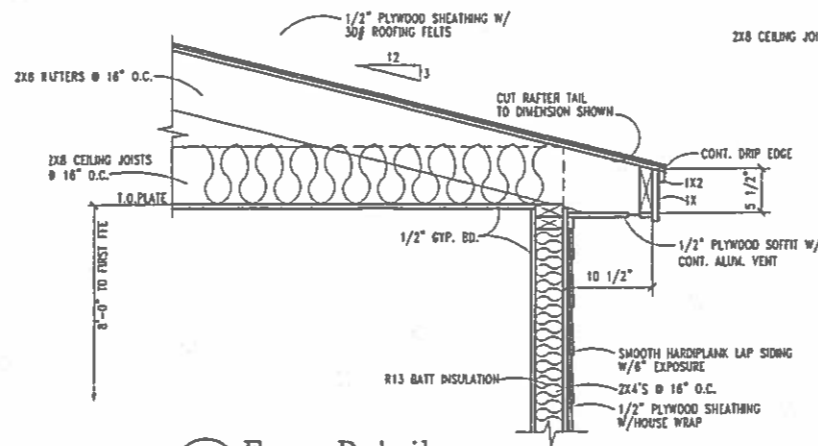
DATE	REV

PROJECT NUM  
2007-008  
PROJECT MAN  
CCJ  
DRAWN BY:  
CCJ  
DRAWING TTL  
MODEL C-  
FLOOR PL

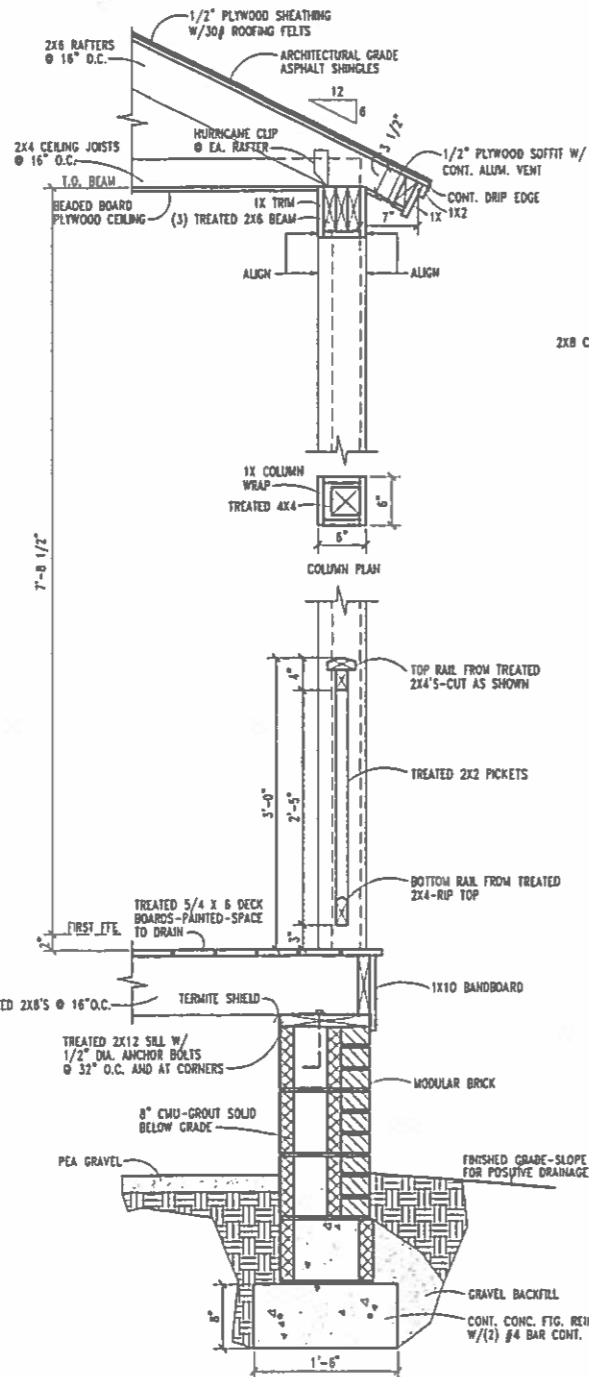
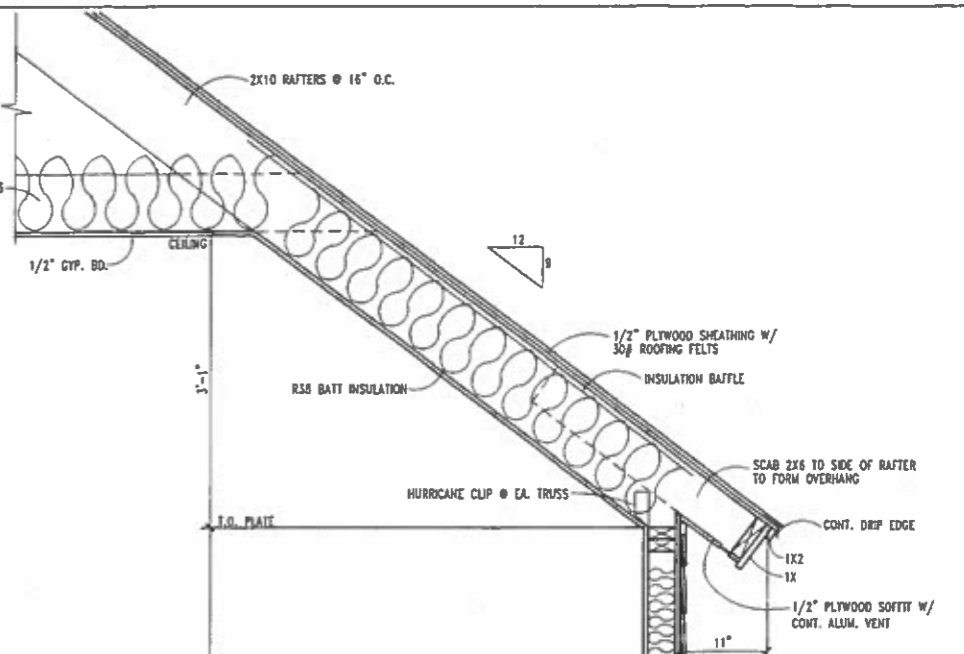




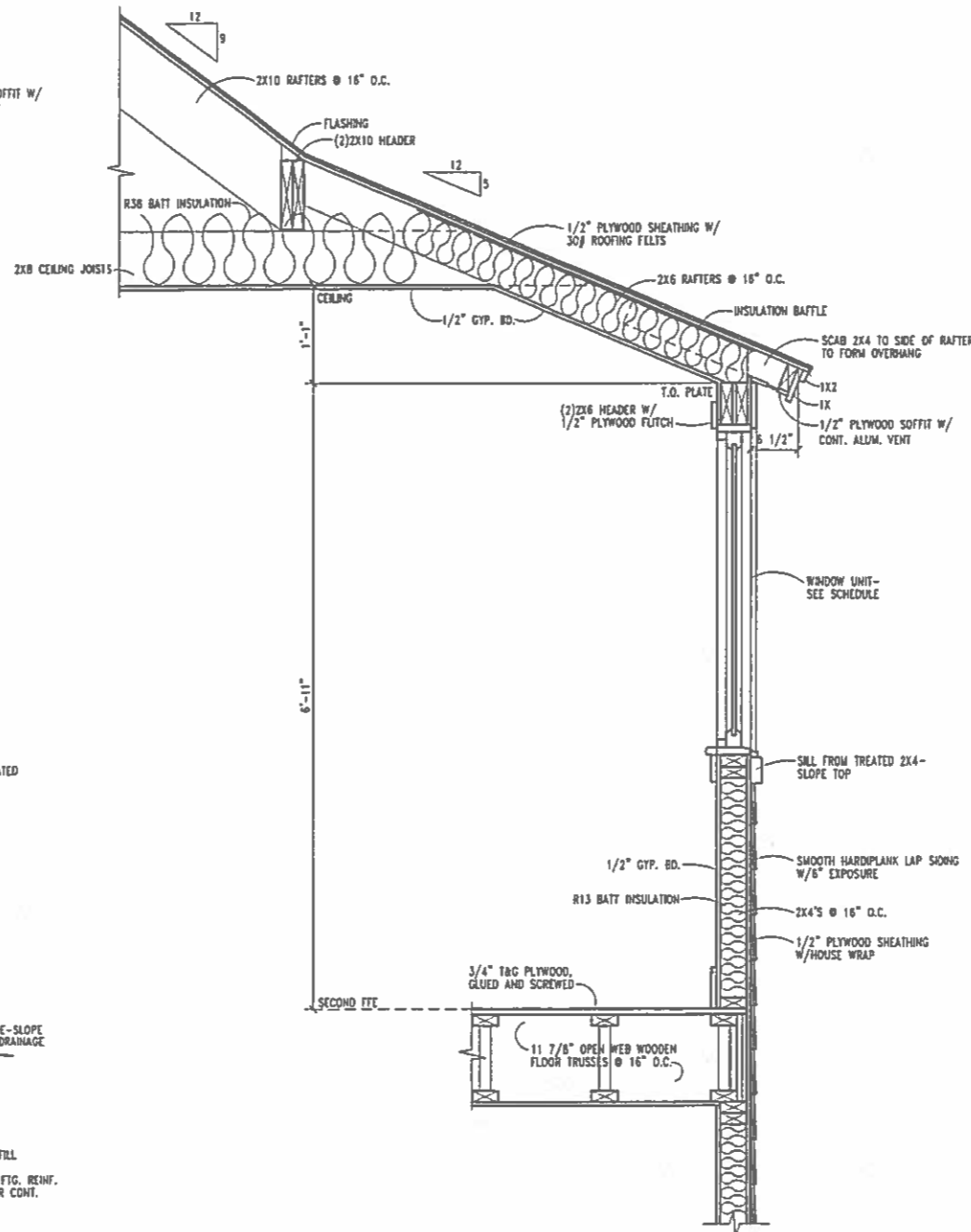
4 Rake Detail  
1"=1'-0"



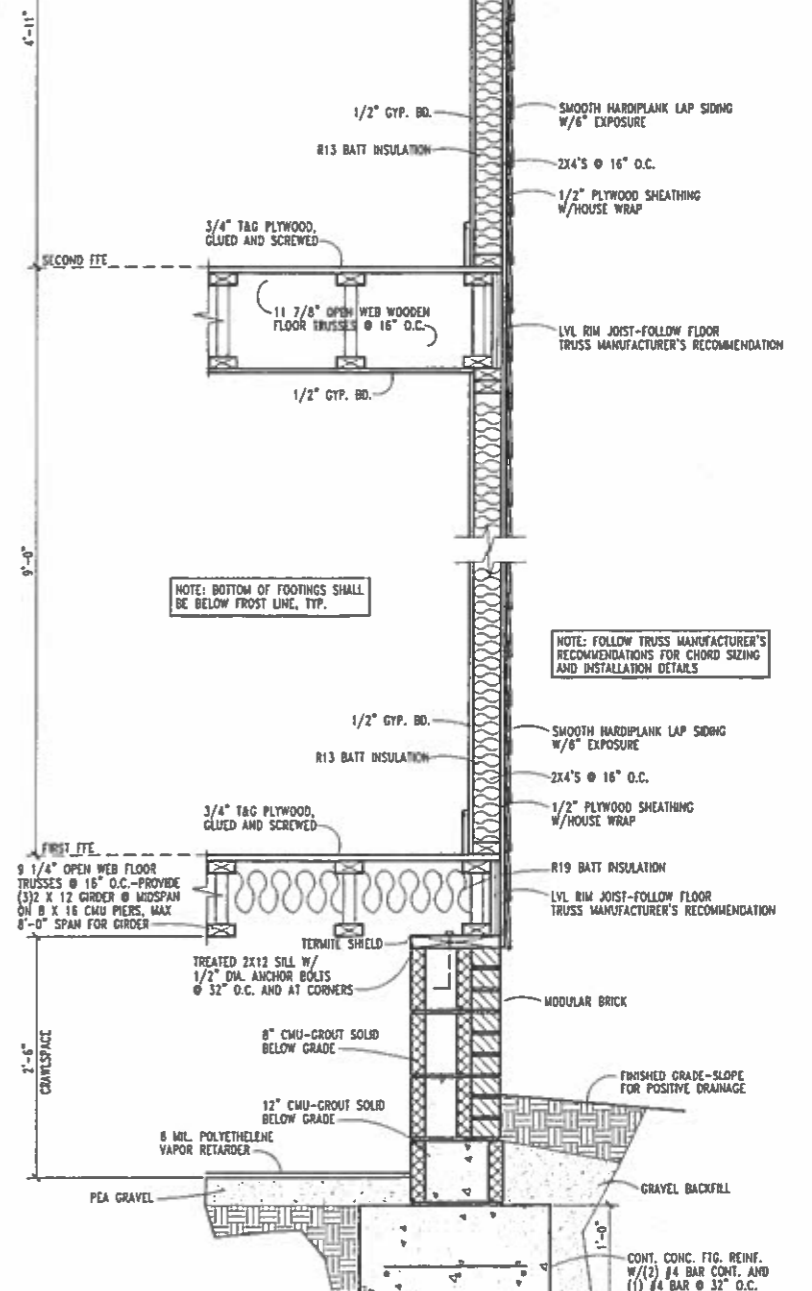
5 Eave Detail  
1"=1'-0"



3 Wall Section  
1"=1'-0"



2 Wall Section  
1"=1'-0"



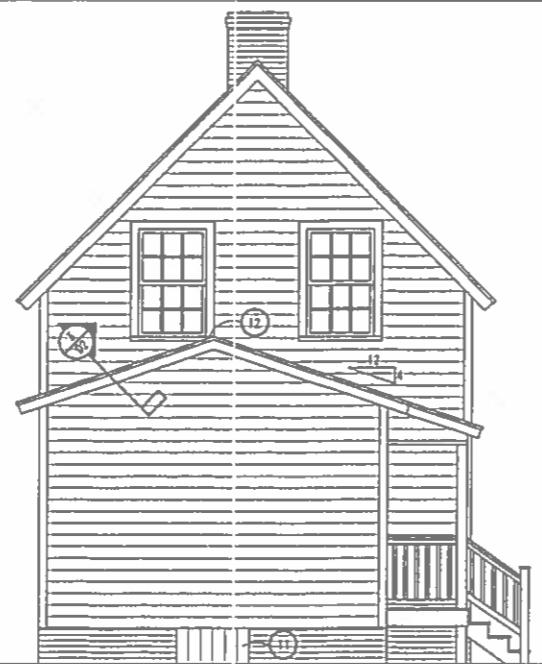
1 Wall Section  
1"=1'-0"

DATE	REV

PROJECT NUMBER  
2007-0088  
PROJECT MANAGER  
CCJ  
DRAWN BY  
CCJ  
DRAWING TITLE  
MODEL C-W  
AND DETAIL



4 Front Elevation  
D1 scale 1/4"=1'-0"



5 Rear Elevation  
D1 scale 1/4"=1'-0"



6 Left Elevation  
D1 scale 1/4"=1'-0"

- 1 SMOOTH PAINTED HARDPLANK LAP SIDING WITH 6" EXPOSURE
- 2 5/4 X 4 PAINTED FIR DOUBLE CORNERBOARDS
- 3 WOODEN WINDOW UNIT WITH ALUMINUM CLAD OR PRIMED WOOD EXTERIOR WITH SIMULATED DIVIDED LIGHT 7/8" MUNTINS (PERMANENTLY APPLIED MUNTINS INSIDE AND OUT WITH SPACER BAR BETWEEN GLASS), LIGHT PATTERN AS SHOWN. EAGLE MODERN DIVIDED LIGHT, OR APPROVED EQUAL.
- 4 ARCHITECTURAL GRADE ASPHALT SHINGLES- ELK PRESTIQUE HIGH DEFINITION, OR BETTER-RE-ROOF ENTIRE HOUSE TO MATCH
- 5 CONTINUOUS RIDGE VENT
- 6 PAINTED WOODEN ENTRY DOOR WITH TRUE DIVIDED LIGHT GLAZING
- 7 PAINTED 5/4 X 4 FIR CASING

- 8 FLASH ALL HORIZONTAL PROJECTIONS, TYP.
- 9 MODULAR BRICK OVER CMU
- 10 16 X 8 GALV. MET. OPERABLE FOUNDATION VENT
- 11 3'-0" WIDE CRAWLSPACE ACCESS DOOR
- 12 ENSURE RIDGE OF ADDITION FALLS BELOW SILL OF EXISTING WINDOW- FLASH TO ENSURE A WATERPROOF JOINT

NOTE: ANY DEVIATION FROM THE EXTERIOR ELEVATIONS AS SHOWN SHALL REQUIRE SUBMISSION OF REVISED DRAWINGS TO THE C.A.R.

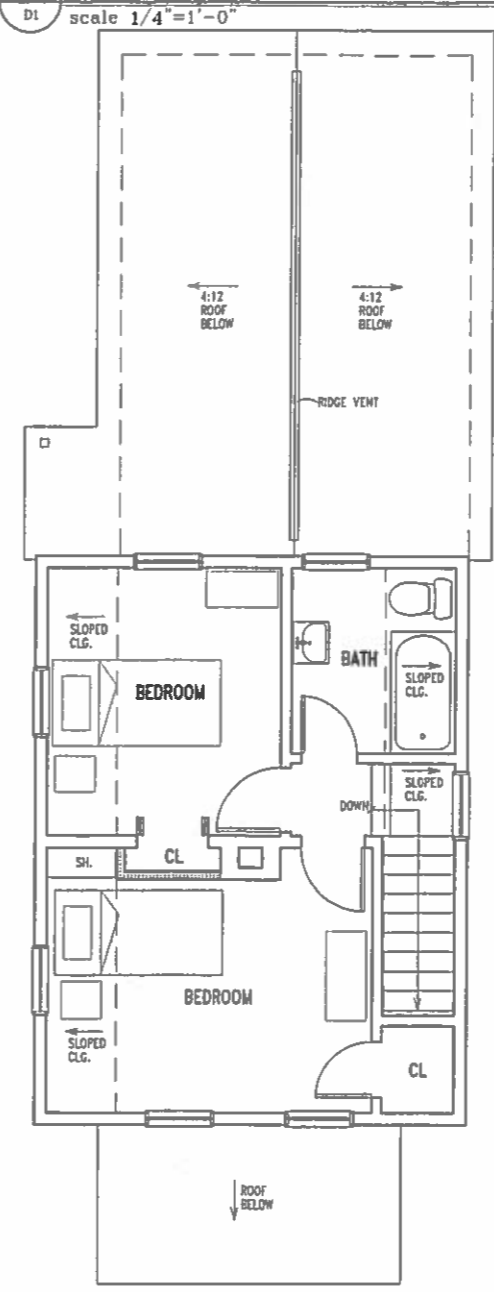
3'-0" X 5'-0" DOUBLE HUNG 6 OVER 6

8 Keyed Notes  
D1

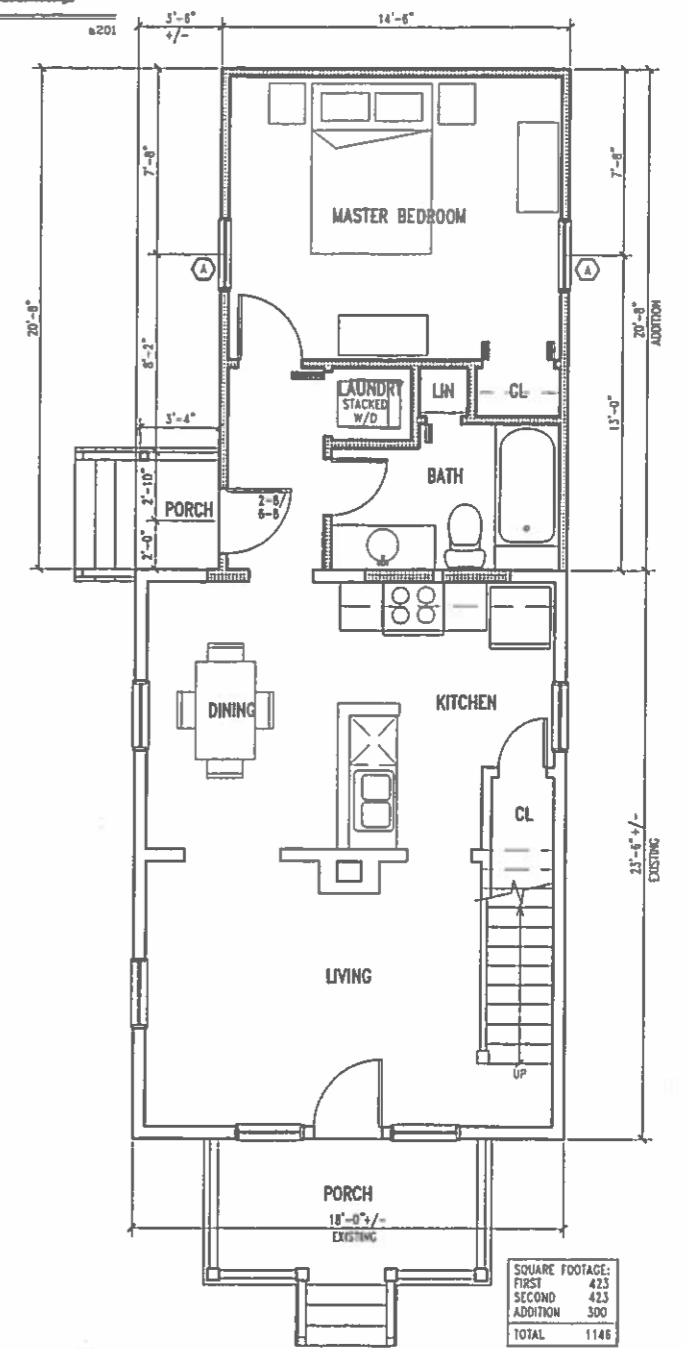
7 Window Schedule  
D1



3 Right Elevation  
D1 scale 1/4"=1'-0"



2 Second Floor Plan  
D1 scale 1/4"=1'-0"



1 First Floor Plan  
D1 scale 1/4"=1'-0"

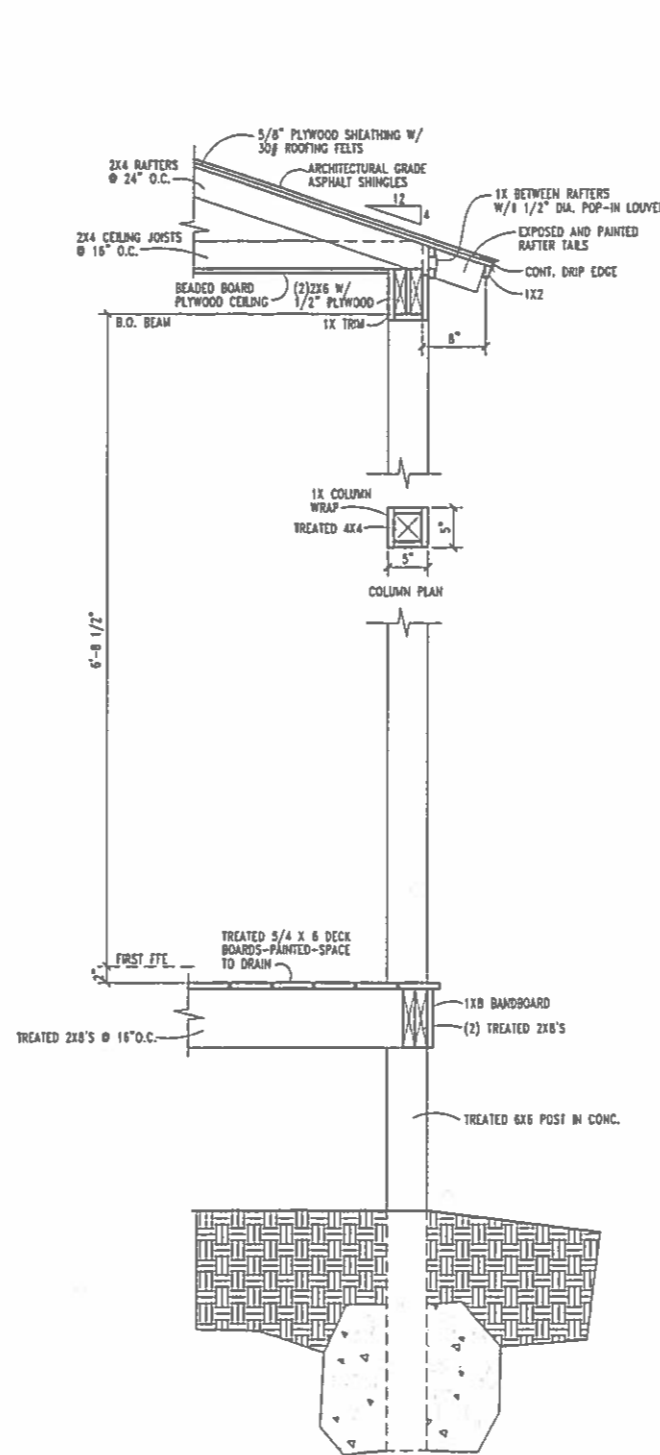
SQUARE FOOTAGE:	
FIRST	423
SECOND	423
ADDITION	300
TOTAL	1146

DATE	REV

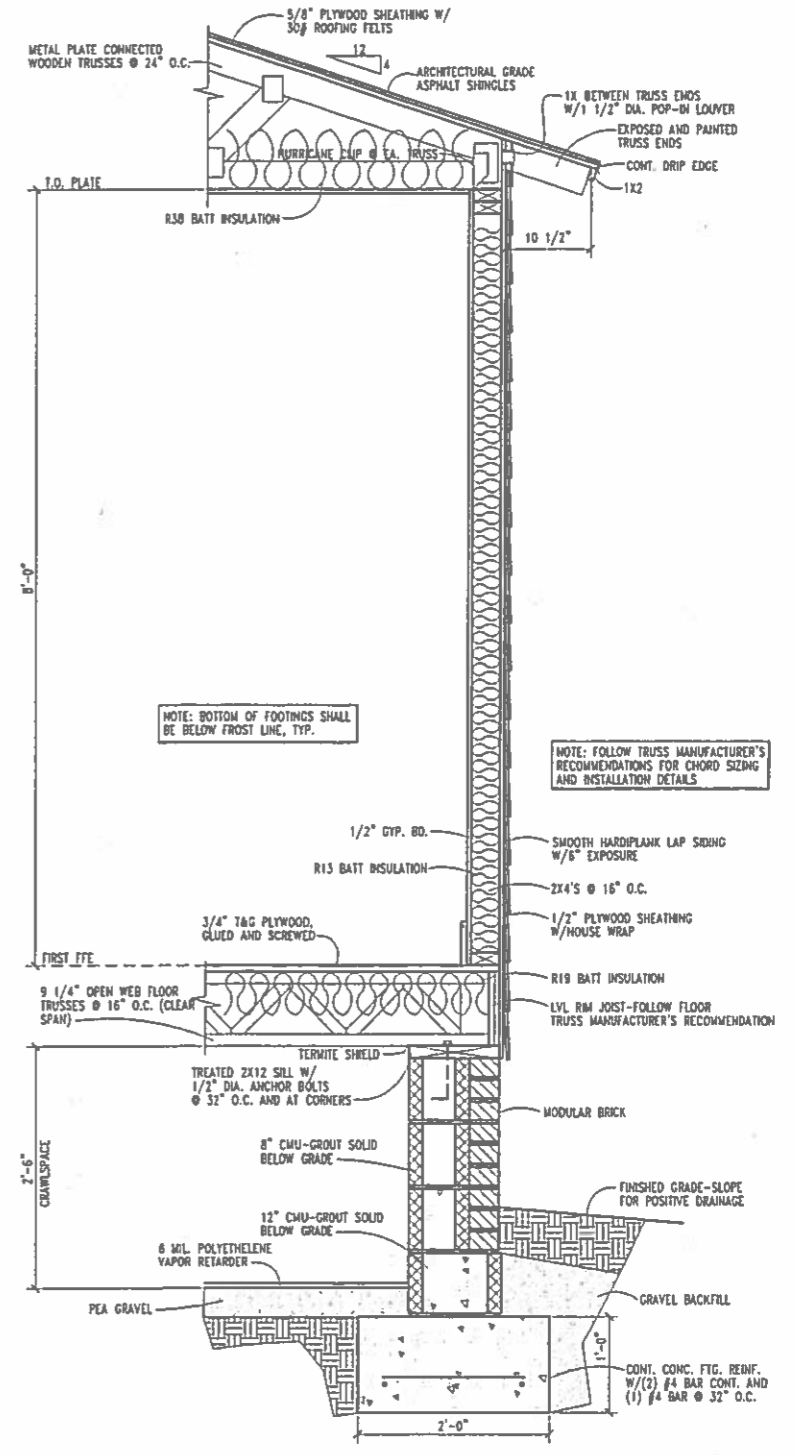
PROJECT NUMB  
2007-008E  
PROJECT MANA  
CCJ  
DRAWN BY:  
CCJ  
DRAWING TITLE:  
MODEL D-A  
FLOOR PLAN

DATE	REVISE

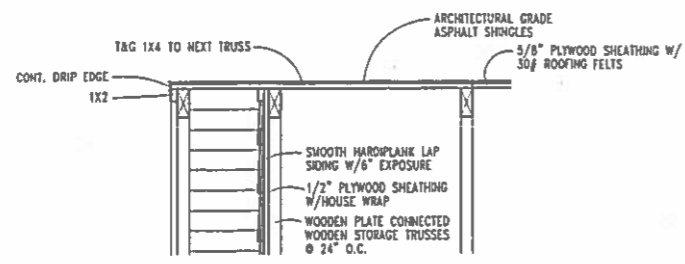
PROJECT NUMBER  
2007-0088  
PROJECT MANAGER  
CCJ  
DRAWN BY:  
CCJ  
DRAWING TITLE:  
MODEL D-W/  
AND DETAILS



2 Wall Section  
1"=1'-0"



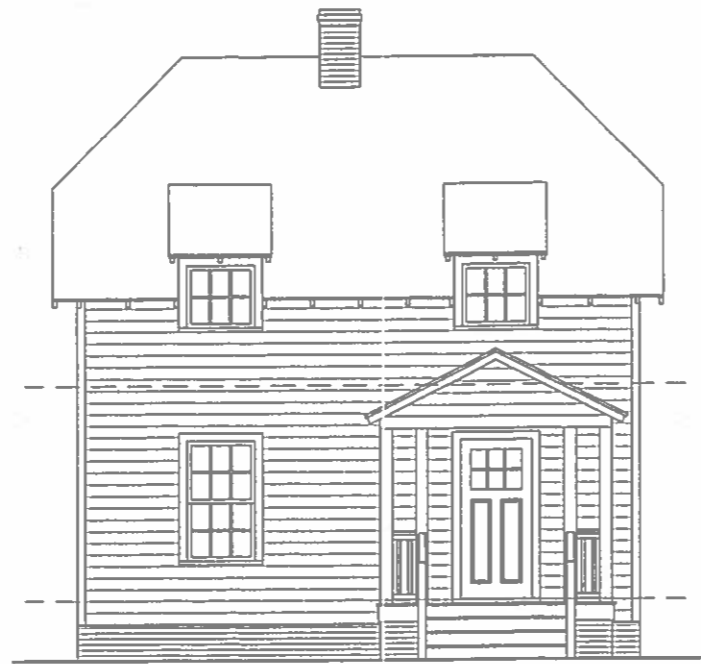
1 Wall Section  
1"=1'-0"



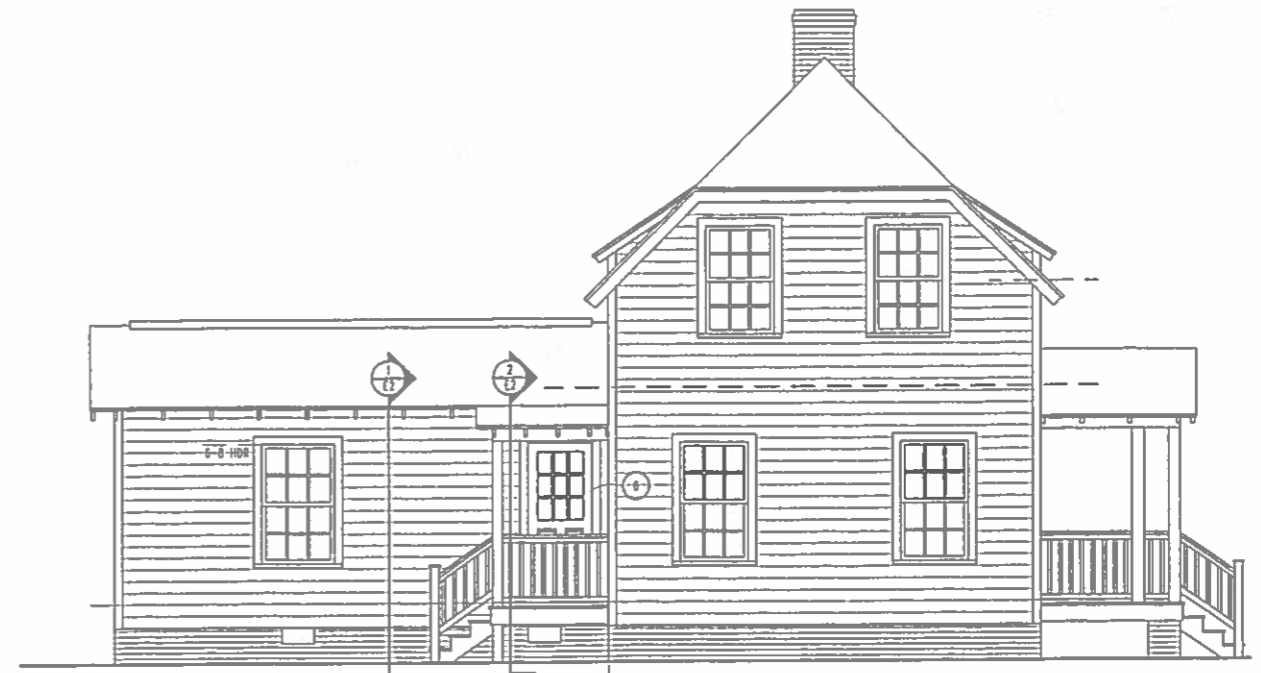
3 Rake Detail  
1"=1'-0"

Ⓐ 5'-0" x 5'-0" DOUBLE HUNG 6 OVER 6

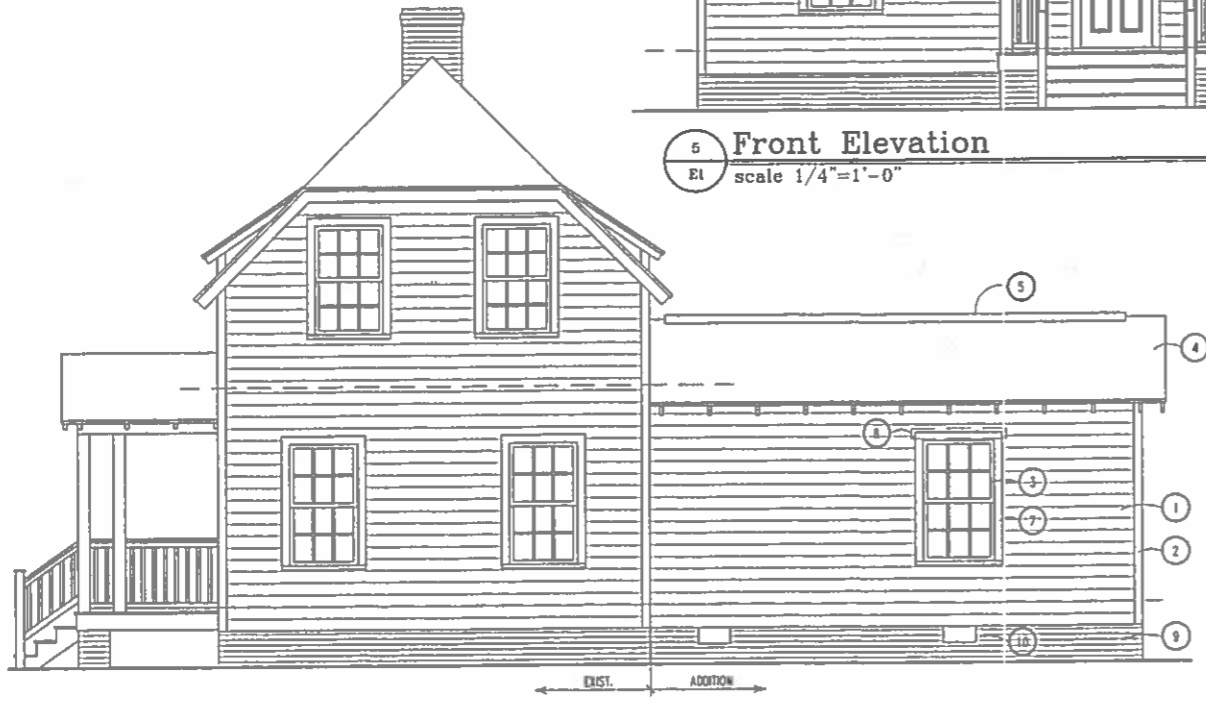
7 Window Schedule  
 E1



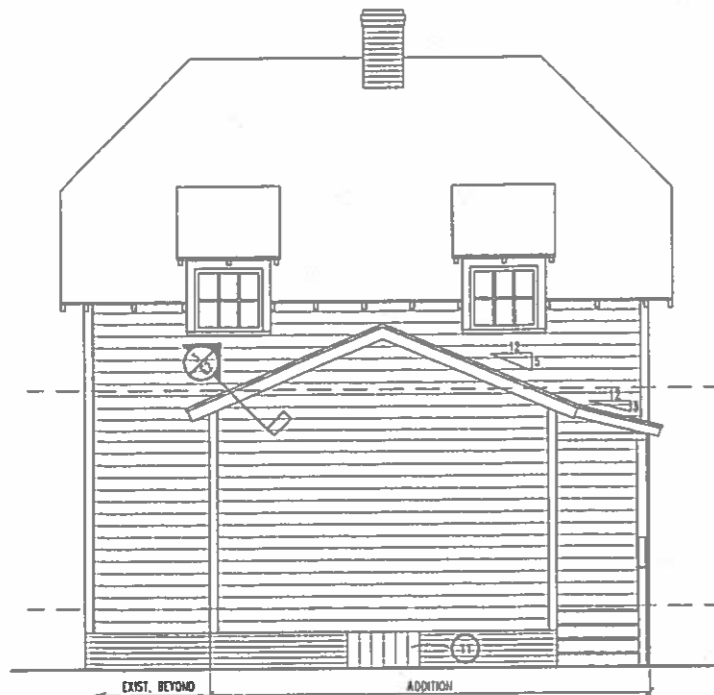
5 Front Elevation  
 E1 scale 1/4"=1'-0" a201



6 Left Elevation  
 E1 scale 1/4"=1'-0" a201



4 Right Elevation  
 E1 scale 1/4"=1'-0" a201

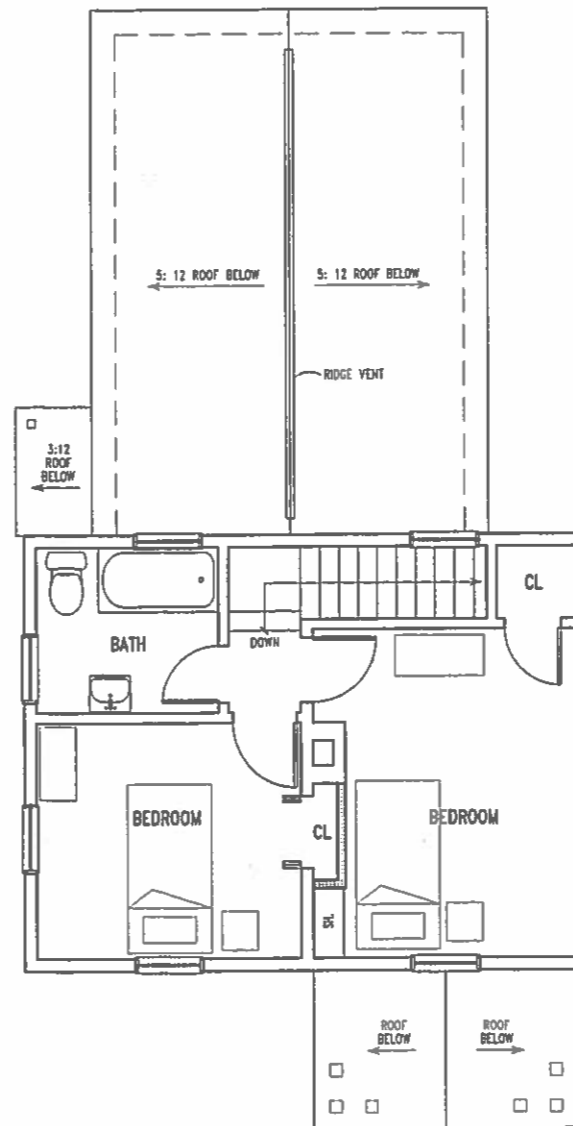


3 Rear Elevation  
 E1 scale 1/4"=1'-0" a201

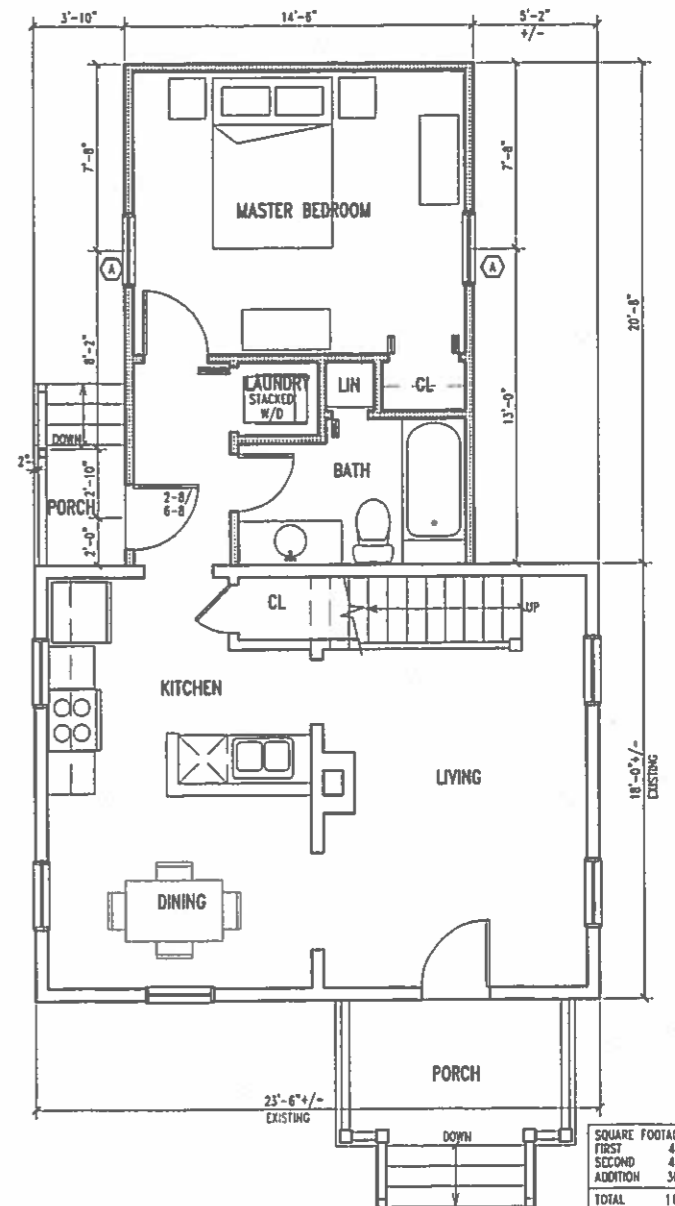
NOTE: ANY DEVIATION FROM THE EXTERIOR ELEVATIONS AS SHOWN SHALL REQUIRE SUBMISSION OF REVISED DRAWINGS TO THE C.A.R.

- 1 SMOOTH PAINTED HARDPLANK LAF SIDING WITH 6" EXPOSURE
- 2 5/4 X 4 PAINTED FIR DOUBLE CORNERBOARDS
- 3 WOODEN WINDOW UNIT WITH ALUMINUM CLAD OR PRIMED WOOD EXTERIOR WITH SIMULATED DIVIDED LIGHT 7/8" MUNTINS (PERMANENTLY APPLIED MUNTINS INSIDE AND OUT WITH SPACER BAR BETWEEN GLASS), LIGHT PATTERN AS SHOWN. EAGLE MODERN DIVIDED LIGHT, OR APPROVED EQUAL.
- 4 ARCHITECTURAL GRADE ASPHALT SHINGLES- ELK PRESTIQUE HIGH DEFINITION, OR BETTER-REEROOF ENTIRE HOUS; TO MATCH
- 5 CONTINUOUS RIDGE VENT
- 6 PAINTED WOODEN ENTRY DOOR WITH TRUE DIVIDED LIGHT GLAZING
- 7 PAINTED 5/4 X 4 FIR CASING
- 8 FLASH ALL HORIZONTAL PROJECTINS, TYP.
- 9 MODULAR BRICK OVER CMU
- 10 16 X 8 GALV. MET. OPERABLE FOUNDATION VENT
- 11 5'-0" WIDE CRAWLSPACE ACCESS DOOR

8 Keyed Notes  
 E1



2 Second Floor Plan  
 E1 scale 1/4"=1'-0" f102

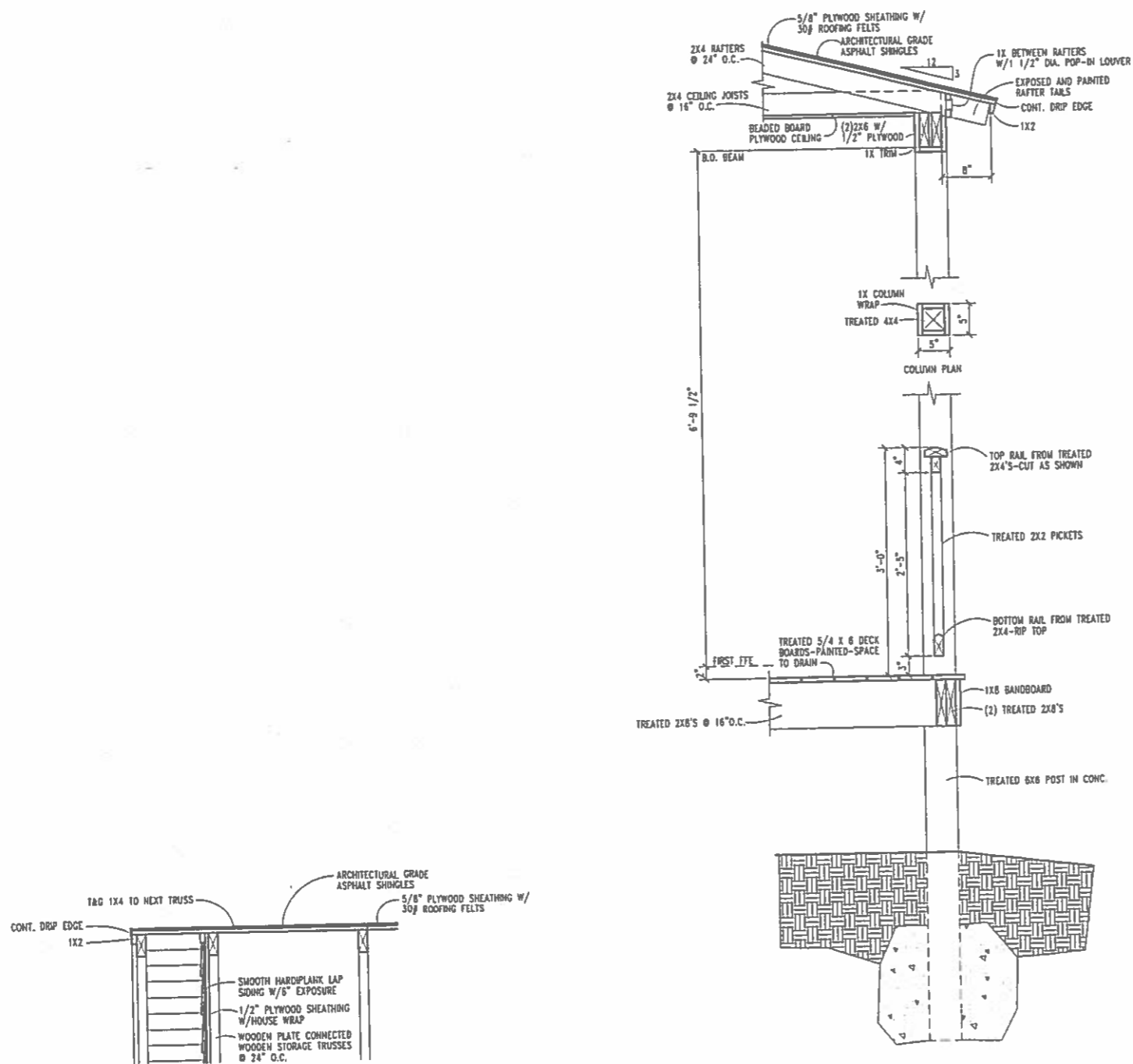


1 First Floor Plan  
 E1 scale 1/4"=1'-0" f101

SQUARE FOOTAGE:	
FIRST	423
SECOND	423
ADDITION	300
TOTAL	1146

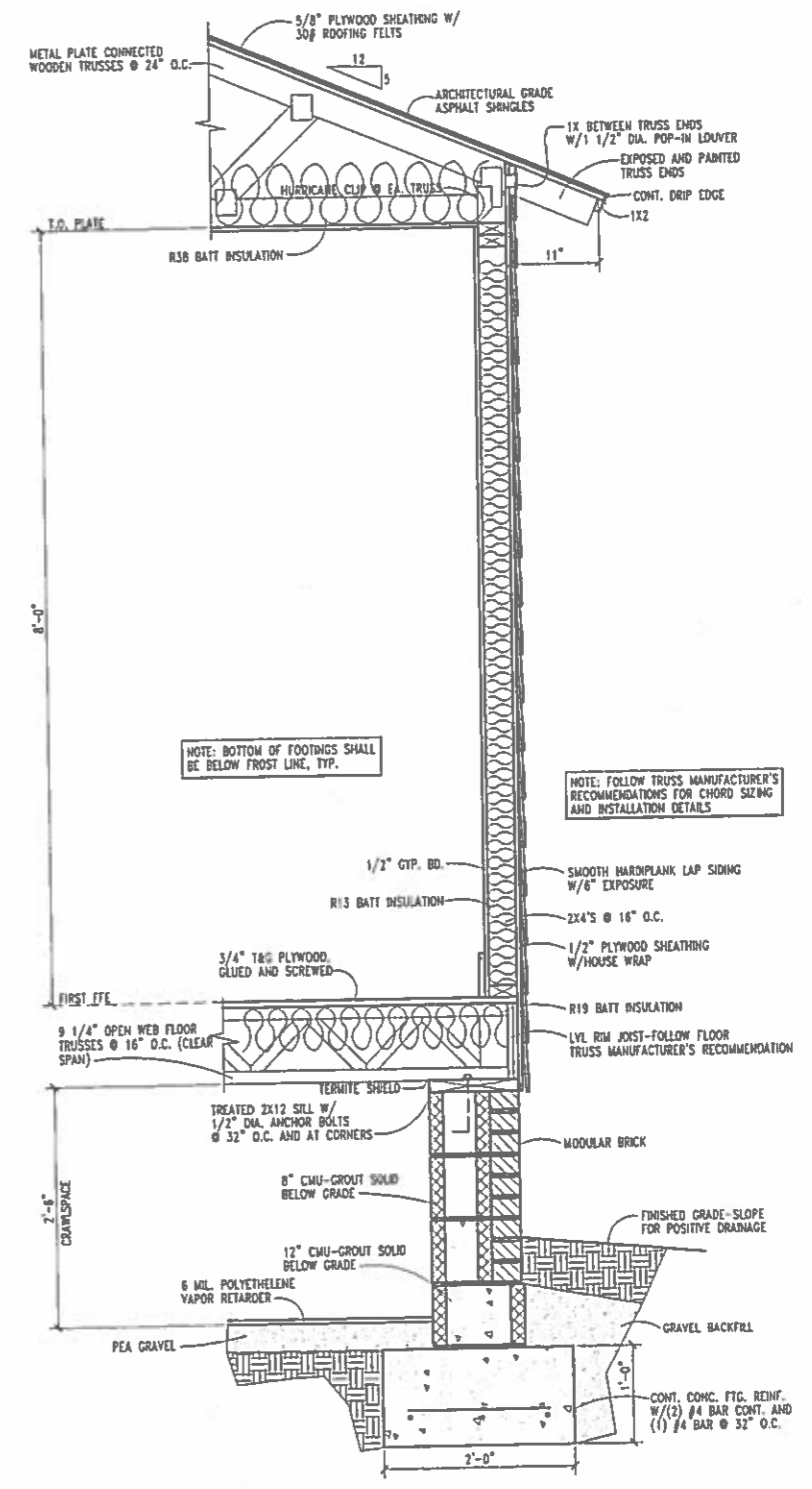
DATE	REV

PROJECT NUMB  
 2007-008  
 PROJECT MANA  
 CCJ  
 DRAWN BY:  
 CCJ  
 DRAWING TITLE  
 MODEL E-A  
 FLOOR PLN



3 Rake Detail  
E2 1"=1'-0"

2 Wall Section  
E2 1"=1'-0"



1 Wall Section  
E2 1"=1'-0"

DATE	RE

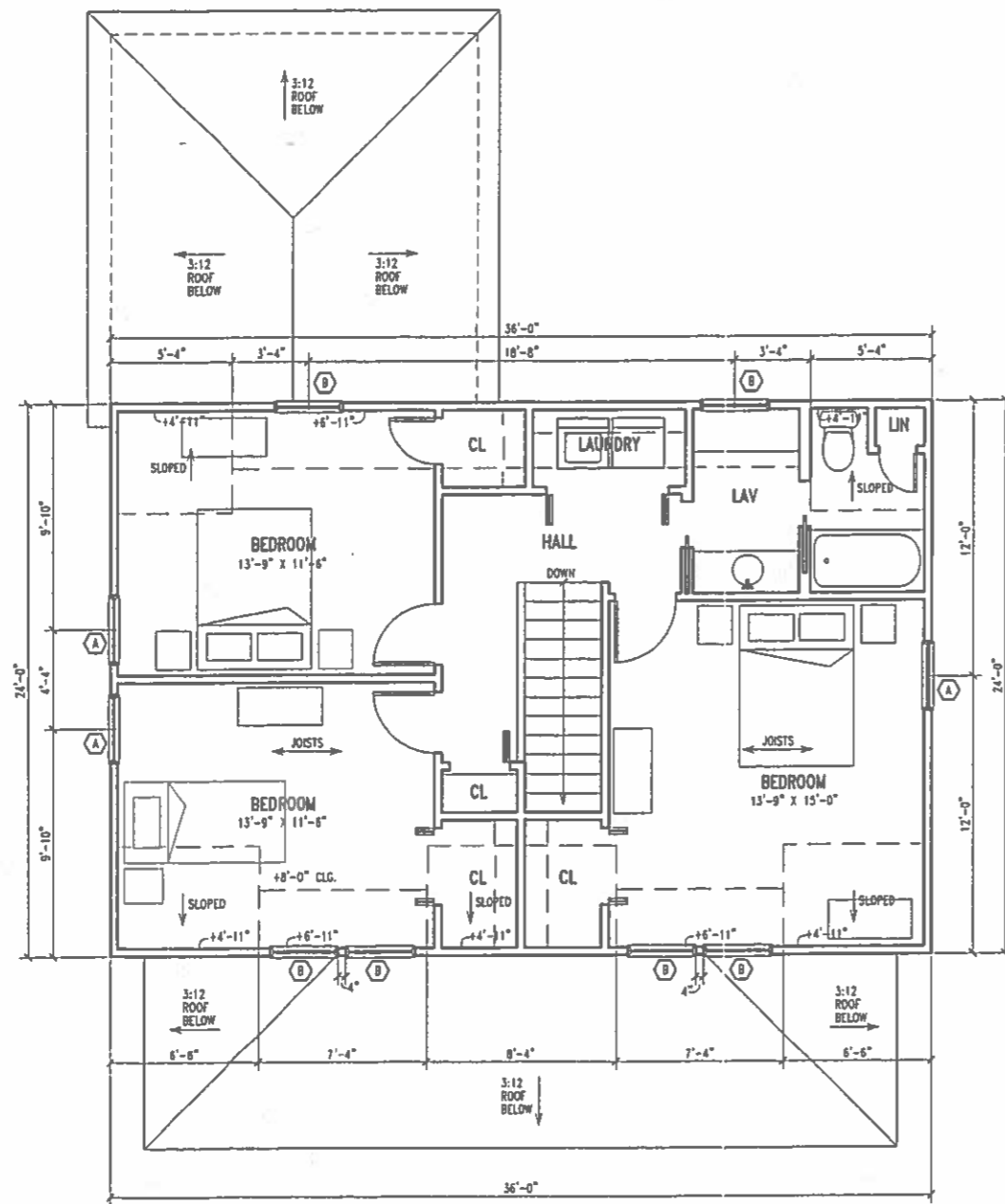
PROJECT NO  
2007-0C  
PROJECT MA  
CCJ  
DRAWN BY:  
CCJ  
DRAWING TT  
MODEL E  
AND DET

- (A) 3'-0" X 5'-0" DOUBLE HUNG 6 OVER 6
- (B) 3'-0" X 3'-6" AWNING 6 LIGHT

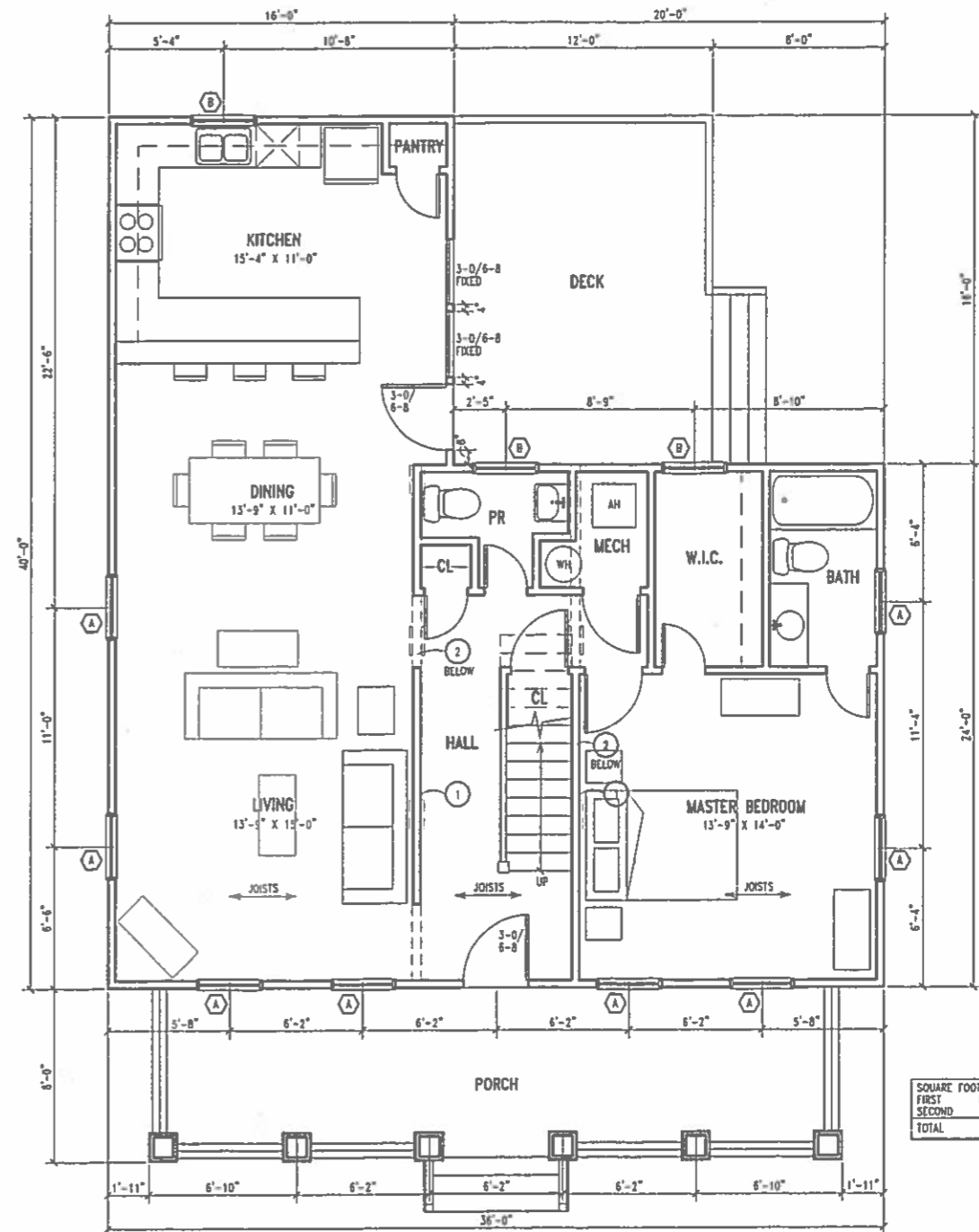
3 Window Schedule

- (1) (3) 2X12 GIRDER ON 88X18 CMU PIER, GROUTED FULL, ON 2'-6" X 3'-6" X 1'-0" DEEP CONC. FTG. REINF. W/(3) #4 BAR EA. WAY
- (2) LOAD BEARING WALL

4 Keyed Notes



2 Second Floor Plan  
F1 scale 1/4"=1'-0" 1102



SQUARE FOOTAGE:	
FIRST	1120
SECOND	884
TOTAL	1984

1 First Floor Plan  
F1 scale 1/4"=1'-0" 1101

DATE	RE

PROJECT NUM  
2007-006  
PROJECT MAN  
CCJ  
DRAWN BY:  
CCJ  
DRAWING TITL  
MODEL F-  
FLOOR PL





4 Rear Elevation  
F2 scale 1/4"=1'-0" a201

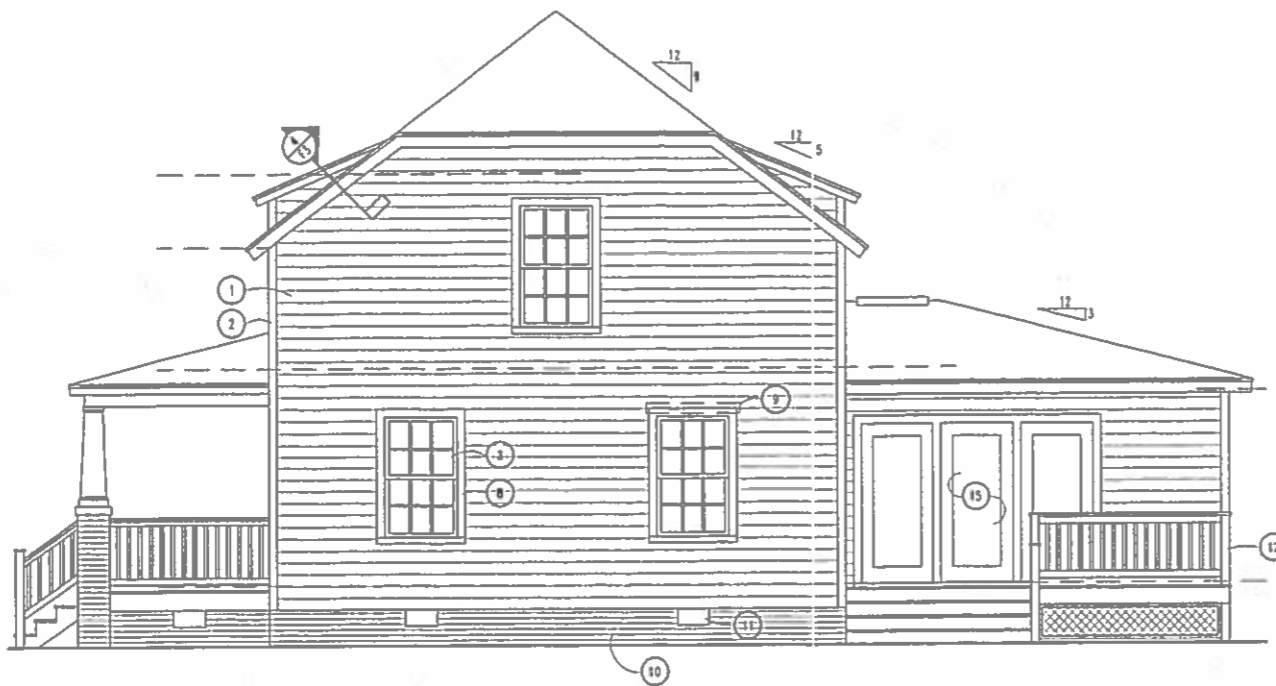


3 Left Elevation  
F2 scale 1/4"=1'-0" a201

- |  |  |   |
|--|--|---|
| 1 SMOOTH PAINTED HARDPLANK LAP SIDING WITH 6" EXPOSURE   | 8 PAINTED 5/4 X 4 FIR CASING                             | 15 PNTD. OR CLAD WOOD FULL LIGHT FRENCH DOORS-SIZE NOTED ON FLOOR PLANS |
| 2 5/4 X 4 PAINTED FIR DOUBLE HUNG CORNERBOARDS   | 9 FLASH ALL HORIZONTAL PROJECTIONS, TYP.                 |   |
| 3 WOODEN WINDOW UNIT WITH ALUMINUM CLAD OR PRIMED WOOD EXTERIOR WITH SIMULATED DIVIDED LIGHT 7/8" MUNTINS (PERMANENTLY APPLIED MUNTINS INSIDE AND OUT WITH SPACER BAR BETWEEN GLASS), LIGHT PATTERN AS SHOWN, EARLY MODERN DIVIDED LIGHT, OR APPROVED EQUAL. | 10 MODULAR BRICK OVER CMU                                |   |
| 4 ARCHITECTURAL GRADE ASPHALT SHINGLES- ELK PRESTIQUE HIGH DEFINITION, OR BETTER   | 11 16 X 8 GALV. MET. OPERABLE FOUNDATION VENT            |   |
| 5 CONTINUOUS RIDGE VENT  | 12 TREATED WOODEN DECK, PAINT ALL EXCEPT FOR DECK BOARDS |   |
| 6 CLIPPED "JERKHEAD" ROOF  | 13 3'-0" WIDE CRAWLSPACE ACCESS DOOR                     |   |
| 7 PAINTED WOODEN ENTRY DOOR WITH TRJE DIVIDED LIGHT GLAZING  | 14 BRICK PIER WITH PAINTED WOODEN COLUMN                 |   |

NOTE: ANY DEVIATION FROM THE EXTERIOR ELEVATIONS AS SHOWN SHALL REQUIRE SUBMISSION OF REVISED DRAWINGS TO THE C.A.R.

5 Keyed Notes  
F5



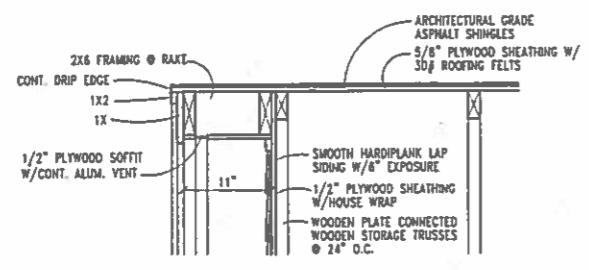
2 Right Elevation  
F2 scale 1/4"=1'-0" a201



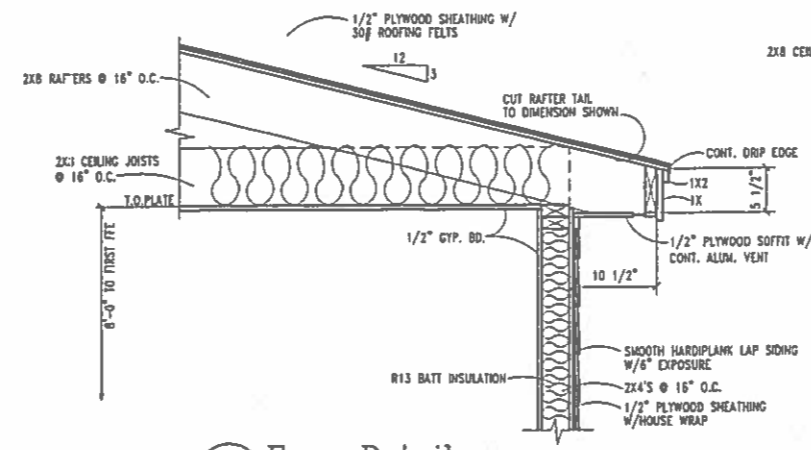
1 Front Elevation  
F2 scale 1/4"=1'-0" a201

DATE	REVI

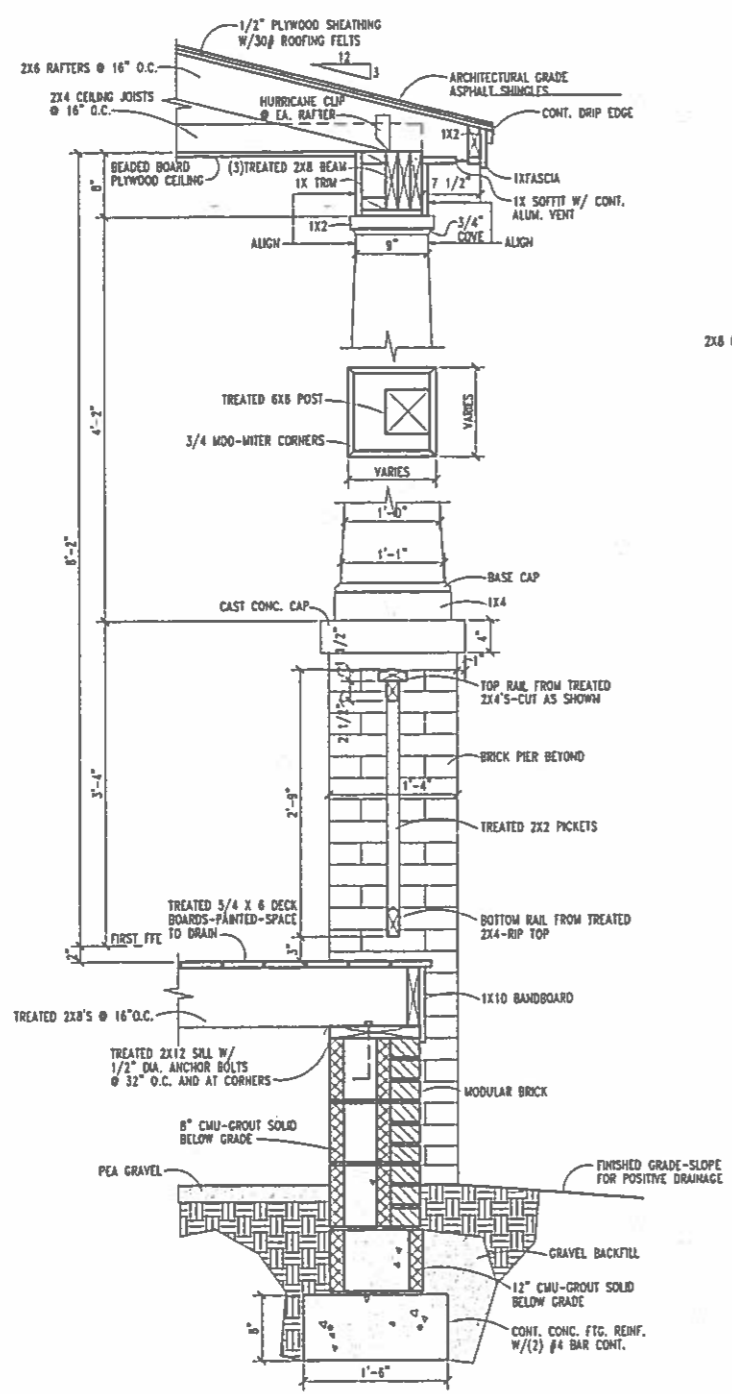
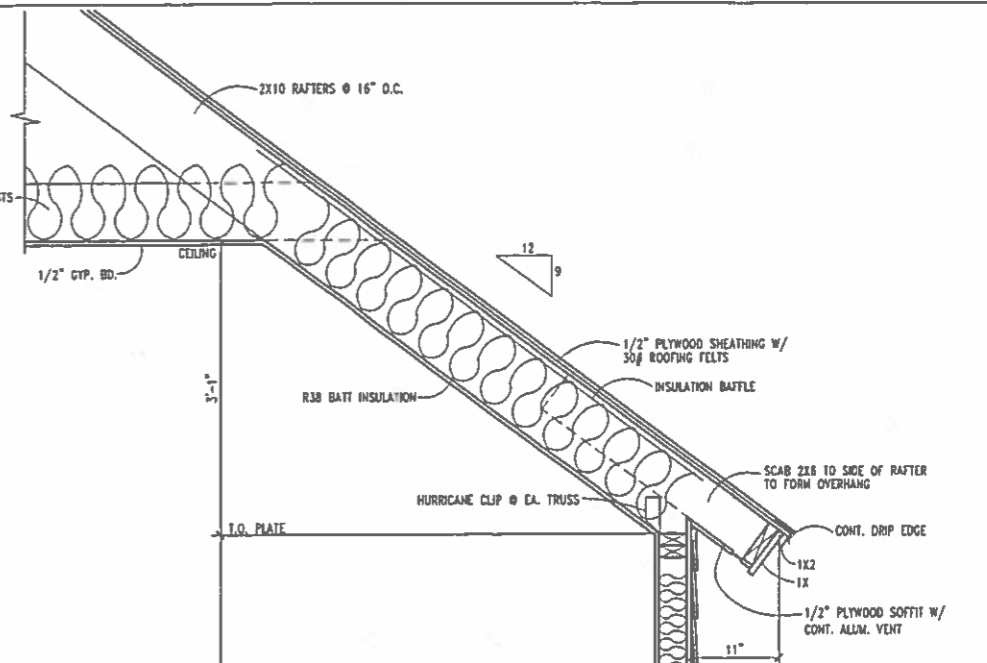
PROJECT NUMB  
2007-008E  
PROJECT MANA  
CCJ  
DRAWN BY:  
CCJ  
DRAWING TITLE  
MODEL F-1  
ELEVATIONS



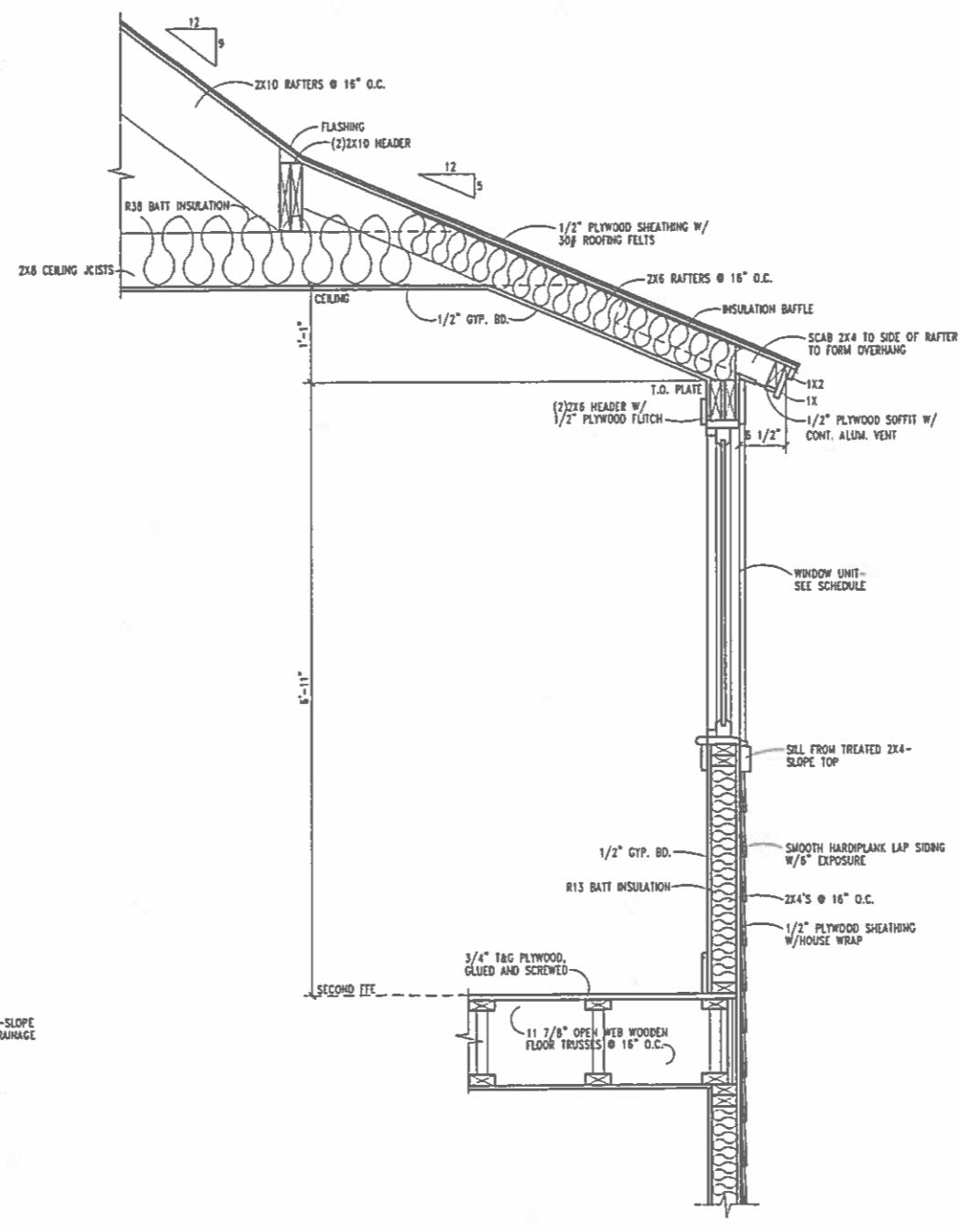
4 Rake Detail  
F3 1"=1'-0"



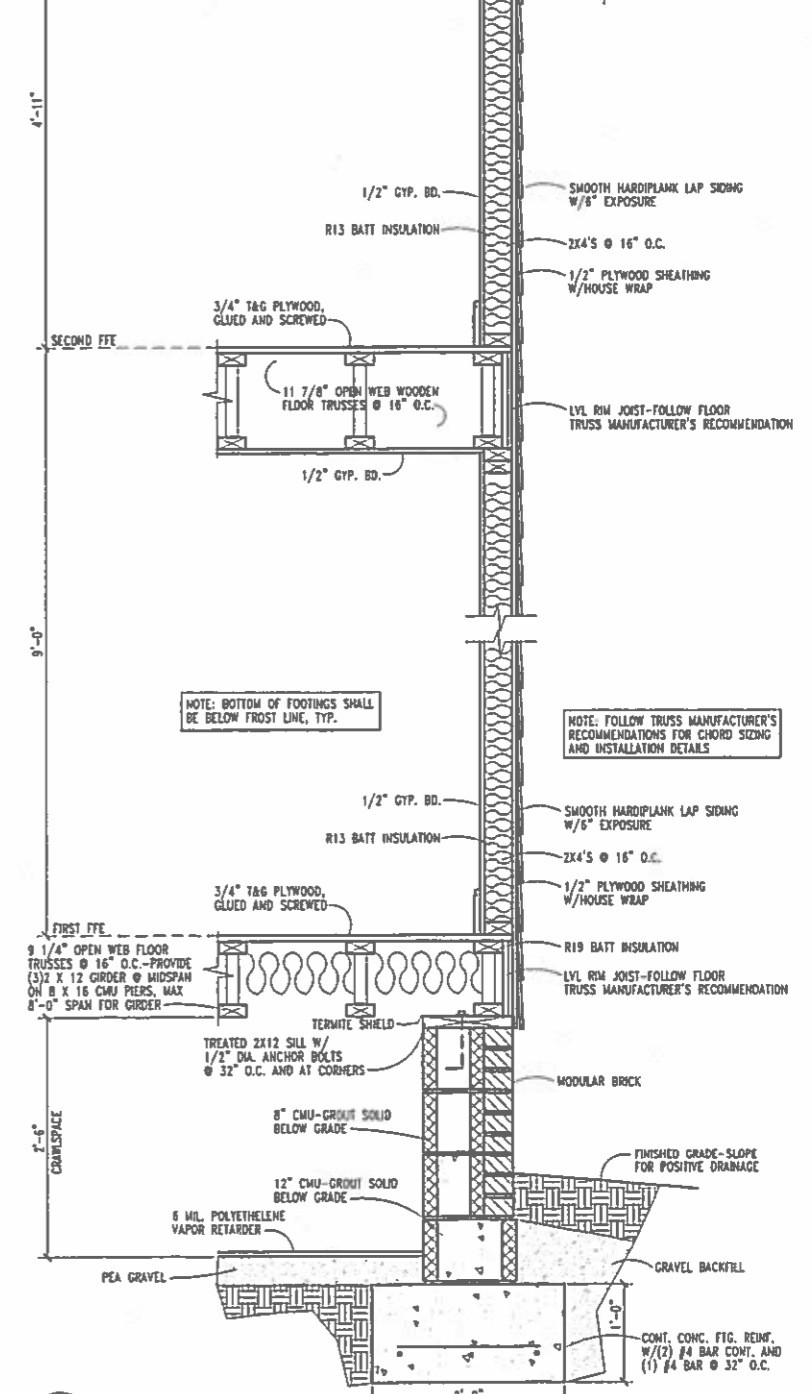
5 Eave Detail  
F3 1"=1'-0"



3 Wall Section  
F3 1"=1'-0"



2 Wall Section  
F2 1"=1'-0"



1 Wall Section  
F3 1"=1'-0"

DATE REVI

DATE	REVI

PROJECT NUMB  
2007-008E  
PROJECT MANAG  
CCJ  
DRAWN BY:  
CCJ  
DRAWING TITLE  
MODEL F-W  
AND DETAIL